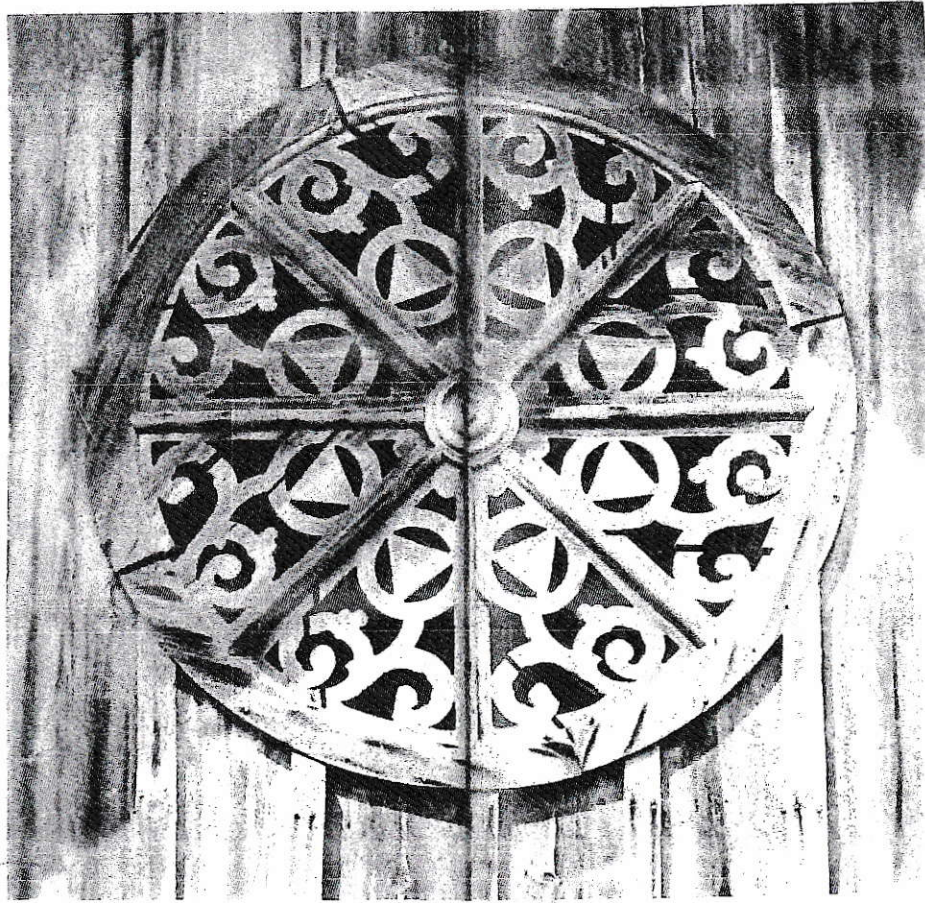


Sparta-Hancock County
Historic Preservation Commission



**SPARTA HISTORIC DISTRICT
SURVEY**



HISTORIC PRESERVATION DIVISION

MARK WILLIAMS
COMMISSIONER

DR. DAVID CRASS
DIVISION DIRECTOR

November 20, 2019

Griffith Polatty
Sparta-Hancock County Historic Preservation Commission
12530 Broad Street
Sparta, GA 31089

RE: Sparta Historic District Designation Report Review and Comments

Dear Mr. Polatty:

Thank you for the opportunity to review the designation report for the Sparta Local Historic District. In accordance with the Georgia Historic Preservation Act § 44-10-26 (b)(1), the local historic preservation commission must prepare an investigation report should a local historic district be proposed. The Historic Preservation Division must be given the opportunity to comment on the commission's report. Our comments below are based on the provisions of your ordinance, the Georgia Historic Preservation Act, and our knowledge of the resources in your community.

We appreciate the maps, representative photos, and the additional historical context that were so well assembled. The submitted report included all necessary elements, as defined in O.C.G.A. §44-10-26(1), and it illustrated the historic, cultural and architectural significance of the resources in the proposed historic district area. Additionally, we recommend that the classification of parcels be changed to contributing & non-contributing, as these are the classifications identified in Sparta's Historic Preservation Ordinance, Sec. IV.B.3.

We support the designation of the Sparta Historic District and encourage the governing body's designation. We will keep the report on file here for public record and would further ask that the HPC offer a downloadable PDF of the report on the City of Sparta and Hancock County websites.

If you, the HPC, or any community members have questions or concerns, please do not hesitate to contact me directly at 770.389.7869 or by email at sarah.rogers@dnr.ga.gov.

Sincerely,

Sarah Rogers
Certified Local Government Coordinator

cc: Anne Floyd, Central Savannah River Area Regional Commission
cc: Borderick Foster, Hancock County Clerk

JEWETT CENTER FOR HISTORIC PRESERVATION
2610 GA HWY 155, SW | STOCKBRIDGE, GA 30281
770.389.7844 | FAX 770.389.7878 | WWW.GEORGIAHPO.ORG

LOCAL HISTORIC PROPERTY DESIGNATION REPORT

This report is for use as part of the process of designating individual properties and districts under the Sparta Hancock County Historic Preservation Ordinance. Generally, instructions found in the publication "Guidelines for Completing National Register Forms" (National Register Bulletin 16) should be followed when completing this form. Complete each item by marking "X" in the appropriate box or by entering the requested information. If an item does not apply to the property being documented, enter "N/A" for "not applicable." For functions, styles, materials and areas of significance, enter only the categories and subcategories listed in the instructions. For additional space use continuation sheets. Type all entries.

NAME OF PROPERTY

Sparta Historic District

LOCATION

Central Business and Early Residential Area
Sparta Georgia 31087

CLASSIFICATION

OWNERSHIP OF PROPERTY

- ☒ private
☒ public – local
☐ public – state
☒ public – federal

CATEGORY OF PROPERTY

- ☐ building(s)
☒ district
☐ site
☐ structure
☐ object

NUMBER OF RESOURCES WITHIN PROPERTY

	NON-CONTRIBUTING	CONTRIBUTING
Developed Parcels	33	171
Vacant Parcels 21		
Total Parcels 225		
Primary Structures 171		
Secondary Structures		

Contributing resources previously designated as Local Landmarks:

Name(s) of previous designation(s):

Name of related multiple property listing:

LOCAL CERTIFICATION

As the designated authority under the Sparta Hancock County Historic Preservation Ordinance, I hereby certify that this designation report meets the documentation standards for designating properties under the Sparta Hancock County Historic Preservation Ordinance and meets the procedural and professional requirements set forth for such designations.

In my opinion, the property does meet the criteria for local designation(s).



Signature of Historic Preservation Commission Chairman

10-18-2019

Date

FUNCTION OR USE

Historic Functions:

Commercial and Residential

Current Functions:

Commercial and Residential

DESCRIPTION

Architectural Classification:

Elements of the following architectural styles are found: Federal, Early Classical Revival, Greek Revival, Gothic Revival, Italianate, Exotic Revival, Second Empire, Stick, Queen Anne, Folk Victorian, Colonial Revival, Mission, Prairie, Craftsman, Ranch House Forms - Hall and Parlor, Saddlebag

Materials:

Foundation:

Continuous brick, brick infill, Stone / Granite, Concrete block

Walls:

Mostly wood Lap, Brick, Vinyl. Stone, Cement Block, Wood Vertical

Roof:

Composition / Asphalt Shingles, Metal / Standing Seam

Other:

DESCRIPTION OF PRESENT AND HISTORIC PHYSICAL APPEARANCE

The village of Sparta, the County Seat of Hancock County, was founded in the late 1700's and took on its present appearance in the late 19th century. In size and architectural style it is still primarily a 19th century town.

The Sparta District has the railroad track as it's Northern boundry, Elm St. as the Eastern boundry, Hancock St. as the Southern boundry and Burwell St. as the Western boundry. Within those boundries are the following streets: Both sides of Jones St. to Memorial Sq., Both sides of Hamilton St. from Burwell St. to Elm St., Both sides of Elm St. from the railroad tracks to Adams St., Both sides of Adams St. from Elm St. to Miles St., Both sides of Broad St. from the Baptist Church to 12404 Broad St., The East side of Miles St. from Broad St. to Short St., Both sides of Rabun St. from Hamilton St. to Broad St., Both side of Maiden Lane from Broad St. to the City Limits, All properties around Monument Sq., Both sides of Court St. from the Courthouse to Hancock St., the North side of Hancock St. from Courthouse St. to Boland St., Both sides of Spring St. from Hamilton St. to Hancock St and Both sides of Boland St. from Hamilton St. to Hancock st.

The most impressive entrance into present - day Sparta is the sweeping tree

DESCRIPTION OF PRESENT AND HISTORIC PHYSICAL APPEARANCE CONTINUED

lined view up by Jones St. to the 1881 Victorian Second Empire style Courthouse. Along the road sits the Terrell - Stone House an 1819 two story house with Palladian door and window treatments, an office cottage and cut stone kitchen that was first owned by prominent physician and agriculturist, Dr. William Terrell.

The Courthouse Sq. acts as the center of town. The finely detailed brick courthouse was designed in 1881 by Perkins and Bruce, Architects, Atlanta. It has a Mansard roof and a slightly projecting central section that only hints of the temple form; a clock tower rises from the central section. A variety of structures, a Victorian two-story frame house, a raised cottage, an early 20th century cottage, a late 18th century cottage and commercial structures surround the square area.

Broad St., that runs in front of the courthouse continues westward to the oldest part of town, Maiden Lane area. At the corner of Broad St. and Maiden Lane are two important twin houses: The Sayre-Shivers House and The Bird-Campbell House. The Sayre-Shivers House was built in 1830 for New Jerseyan Robert Sayre and is a transitional Federal - Greek Revival structure with a delicately leaded side and transom lights around the front door. Paired Doric Columns support the entrance porch; leading into the four room central hall plan. This house is often called a twin to the Bird-Campbell House across Maiden Lane. Both houses have the same plan and are entered by a small entrance porch above a raised basement. The Bird-Campbell House was constructed in 1834 by Wilson Bird. The finished details of the house, column capitals, interior wood trim and plaster work are copied from Minard Lafever's design book published in 1832.

Farther up Broad St. is the Rossiter-Little House, generally considered the oldest house in Sparta. The present structure was built onto and around a log cabin (1797) used first as a fort and later by the Revolutionary surgeon, Timothy Rossiter. It is built on the highest point in Sparta. Nearby are several other structures including the Lula Rives House (ca.1805), the Vardiman House (late 19th Century) and the grand Neo-Classical Burwell House.

Maiden Lane, behind the twin houses is a quiet residential street with a pleasant variety of architectural styles from the Plantation Plain style Baxter Carswell House to the Federal styles of the Abercrombie House and the Berry House to the severe Greek Revival temple form structure as a dormitory of the "Sparta Female Model School" founded in 1832. One exception is the 20th Century California Greene brothers style house known as the Walker-Moore House.

The commercial section of Sparta is east of the Courthouse on Broad St. Especially noteworthy is the Drummer's or Lafayette Hotel (1840) with its broad portico and steeped gable, the Old City Hall (1850) and the brick Watkins Building (1859) with its simple Italianate bracketing.

The eastern boundary of the district is defined by Elm St. on which several early 19th century structures still exist. At the intersection of Adams St. and Elm St. is the ruin of Pomegranate Hall (ca.1830). At the other end of Elm St. are the Harley-Rives House, (ca.1850), a two story, four room, central hall plan with an unusually high entablature, and the smaller cottage-like structure known as the Lane-Walker House (ca.1835).

STATEMENT OF SIGNIFICANCE

Certifying official has considered the significance of this property in relation to other properties:

() Nationally (X) Statewide (X) Locally

AREAS OF SIGNIFICANCE

Architecture
Education
Religion
Agriculture
African American History

PERIOD OF SIGNIFICANCE

Post-Revolutionary
Antebellum
Postbellum
Early 20th Century

SIGNIFICANT DATES

1797 - Sparta designated county seat
1805 - Sparta incorporated
1832 - Sparta Female Model School established
1841 - Hancock Planters Club holds first Agricultural Fair in Georgia
1881 - Hancock County Courthouse designed by Perkins and Bruce of Atlanta

SIGNIFICANT PERSONS

Bishop Pierce
Bishop Holsey
Linton Stephens
Amanda America Dickson
Jean Toomer
"Hurricane" Jackson

CULTURAL AFFILIATIONS

ARCHITECT / BUILDER

Perkins and Bruce Hancock County Courthouse

Local Historic Property Designation Report

NARRATIVE STATEMENT OF SIGNIFICANCE (areas of significance)

Architecture- The development of the City includes structures from the late 18th century to the mid-20th century in the commercial and residential areas.
Education- The city has structures from the Boy's Academy and the Model girl's schools which have been converted into single family residences.
Religion- There are several impressive religious structures in the city which are associated with important religious leaders in Georgia.
Agriculture- The development of the residential and commercial areas are directly related to the agricultural development and practices in the county.
African American History- Every aspect of Sparta's development has a direct line through which African Americans played an important part.

NATIONAL REGISTER CRITERIA

The proposed district qualifies under National Register Criteria
B. because it's associated with the lives of persons significant in our past
C. Embodies the distinctive characteristics of a type, period or method of construction; represent the work of a master; possesses high artistic values;

PERIOD OF SIGNIFICANCE (justification)

The period of significance encompasses the full period of development of the City of Sparta as a rural county seat.

CONTRIBUTING / NONCONTRIBUTING RESOURCES

All of the primary structures within the proposed district boundries were constructed within the period of significance.
Noncontributing structures are confined to Spring St. and Broad St. these are moble homes or modern metal siding commercial buildings.

DEVELOPMENTAL HISTORY / HISTORIC CONTEXT (if appropriate)

See attachment that follows

STATEMENT OF SIGNIFICANCE

The central Georgia town of Sparta was one of the most advanced 19th century "plantation" towns in Georgia. Sparta's intellectual progressiveness was manifested in its educational institutions, its early experimental planting, its architecture, and its religious connections. It was and is the county seat of Hancock County. Designated the county seat in 1797 and incorporated in 1805, Sparta is the oldest city west of the Ogeechee River, even two years older than Milledgeville.

George White in 1849 Statistics of Georgia notes that, "this place is proverbial for the intelligence of its inhabitants.... From the earliest settlements of this county, the citizens have been particularly distinguished for their great attention to the subject of education. At this time there are four academies, besides 20 common schools in the county."

Not only did Sparta have one of the first girls schools, but more importantly early in the 19th century, experimental agricultural planting was carried on by the Hancock Planters Club. A Farmers Gazette was published in Sparta from 1803 - 6 and the first agricultural fair in Georgia was held in 1841. In 1852 Dr. William Terrell bequest \$20,000.00 to the University of Georgia for a State College of Agriculture.

The first religious structure built in Sparta was the Methodist Church in 1805. The following year the Georgia - South Carolina Methodist Conference was held in Sparta. The Pierce family was instrumental in the development of the Methodist Church in Georgia. Reddick Pierce and his brother Dr. Lovick Pierce were both deacons and ministers. Lovick's son became a Bishop of the Methodist Church. Bishop George F. Pierce of Sparta, was elected first President of Wesleyan College in 1839 then President of Emory College in 1842.

In 1863 Bishop Pierce married slaves, Harriet Turner and Lucius Henery Holsey at Bishop Pierce's home. After the Civil War Holsey helped organize the Colored Methodist Episcopal Church in 1870. In 1873 Holsey was made a Bishop of the church. He was also a driving force behind the establishment of Paine College in Augusta, Georgia.

Bishop Holsey's daughter Kate married Charles Dickson, the son of Amanda America Dickson. Amanda, the daughter of a slave and her owner, became the wealthiest black woman in 19th century America. She was born 11-20-1849, on the Hancock County plantation of her father, the famous white agricultural reformer, David Dickson was the wealthiest planter in the county.

Amanda spent her childhood and adolescence in the house of her white grandmother, where she learned to read and write and play the piano. After the Civil War her mother Julia moved into a home on Elm Street in Sparta, while Amanda attended the Normal School of Atlanta University from 1876 to 1878.

David Dickson died in 1885, leaving the bulk of his estate to Amanda and subsequently to her children after her death. Executors appraised the estate which included 17,000 acres of land in Hancock and Washington counties at \$309,000.00. In his will David Dickson stated that the administration of his estate was to be left to the sound judgement and unlimited discretion of Amanda without interference from any quarter, including any husband she might have.

David Dickson's white relatives contested the will, but the superior court of Hancock County ruled in favor of Amanda in 1885. It should be noted that the case was held in the Hancock County courthouse, which was built with funds from David Dickson's purchase of the majority of the courthouse bonds. The white relatives then appealed to the Georgia Supreme Court, which upheld the lower court decision in 1887. The higher court stated that the "rights of each race are controlled and governed by the same enactments or principles of law" In other words, whatever rights and privileges belong to a bastard white child belonged to a mixed-race child as well.

STATEMENT OF SIGNIFICANCE

In 1892 Amanda married Nathan Toomer of Houston County Georgia. Nathan was also of mixed-race and had been his owner's personal assistant. Nathan learned the manner of the white upper class. Toomer and Dickson's marriage lasted until her death on June 11, 1893.

Shortly thereafter Nathan Toomer married Nina Pinchback. The son of this marriage was Jean Toomer. Jean Toomer, the Harlem Renaissance author, is best known for his novel Cane in 1923. It is an influential work about African American life in which Toomer drew largely on his experiences in Hancock County. In 1921 he accepted a short-term job as a substitute principal at the Sparta Agricultural and Industrial Institute. In Sparta he experienced a creative outpouring of poetry, drama, stories and sketches that formed Cane, a narrative that begins in the South, switches to the North, and returns to the South for its conclusion. "Semper," the Southern setting of Cane, is modeled on Sparta and the people and places Toomer encountered there in the fall of 1921.

The progressive atmosphere that pervaded Sparta in the 19th century is still very much evident in the architecture. Although several fine structures have been lost over time, there remains an excellent collection of domestic and commercial buildings. The structures run the gamut of designs and styles from the Early Federal to the 20th century Prairie and more recently the Ranch style homes. For a town of its size, Sparta was on the cutting edge of popular architectural styles; the Temple front Greek Revival of the 1823 girls school; the Bird-Campbell House's use of designs from Minard Lafever in 1834; the 1853 Gothic Revival Dubose house; on to the Victorian structures and early 20th century buildings.

MAJOR BIBLIOGRAPHIC REFERENCES

Previous documentation on file:

- ☐ Preliminary determination of individual listing
- ☐ Preliminary determination of individual listing has been issued / date issued:
- ☒ Previously listed in the National Register
- ☐ Previously determined eligible by the National Register
- ☐ Designated a National Historic Landmark
- ☐ Recorded by Historic American Buildings Survey #
- ☐ Recorded by Historic American Engineering Record #

Primary location of additional data:

- ☒ State Historic Preservation Office
- ☐ Other state agency
- ☒ Federal agency
- ☒ Local government
- ☐ University
- ☒ Other, specify repository Local Library

Georgia Historic Resources Survey Number (if assigned)

TABLE OF CONTENTS

STREET	PAGE No.
Adams	1
Augusta Hwy	7
Boland	7
Broad	13
Burwell	34
Court	35
Courthouse Sq	37
Elm	37
Hamilton	41
Hancock	50
Jones	51
Maiden Ln	54
Monument Sq	62
Myrtle	63
Powelton Ave	64
Rabun	64
Spring	65



Ruin

107 Adams St

S008 048

R; 0.85 ac

Pomegrante Hall



American Foursquare
ca. 1900 two stories asymmetrical
hip asphalt weatherboard
porch full front one story
double hung sash 1/1 windows

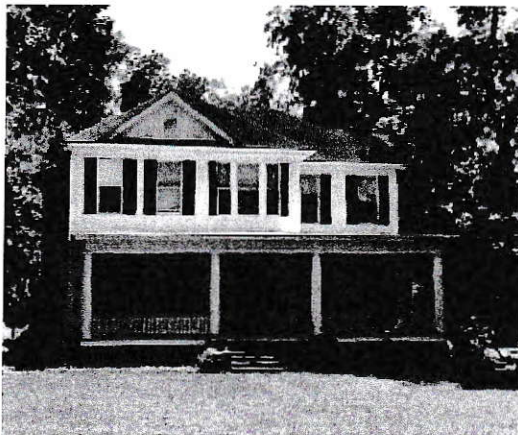
contributing

114 Adams St

S008 046

R; 0.68 ac

Yancey



Colonial Revival
ca. 1900 two stories asymmetrical
hip asphalt shingles clapboard siding
covered with vinyl
porch - full one story
double hung sash 1/1 windows

contributing

135 Adams St

S008 047

R; 1.37 ac

Louis Rozier



ca. 1975 Ranch
Brick asymmetrical
Hip roof asphalt shingles
double hung sash 6/1 windows

contributing

138 Adams St S008 045

R; 2 ac

Walker

-- VACANT LOT --

191 Adams St S009 004

R; 0.72 ac

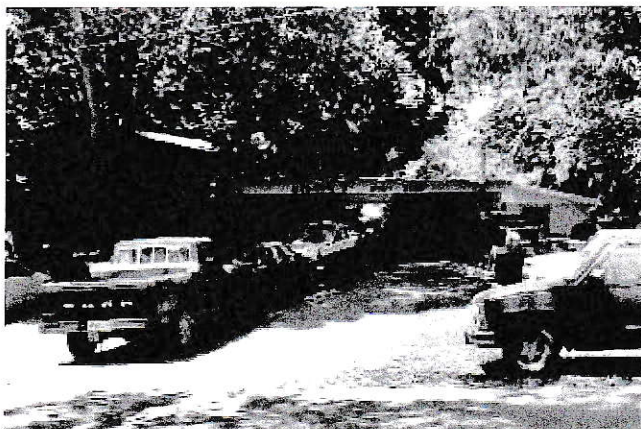
Murphy

-- VACANT LOT --

0 Adams St S009 003

R; 0.68 ac

Harrouk



noncontributing

212 Adams St S003 121

C; 0.39 ac

Murphy Body Shop



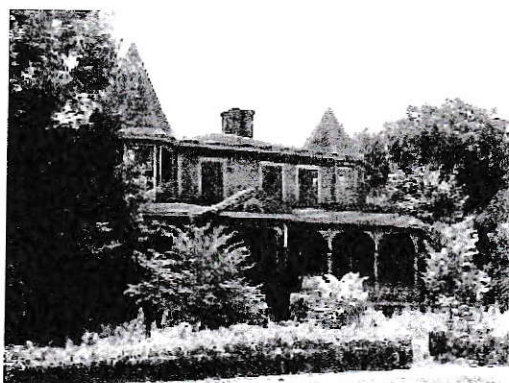
Folk Victorian Barn
ca. 1899 two stories side gable
board and batten
metal roof
gingerbread trim

contributing

Adams St @ Boland St S004 044
Exempt; 0.2 ac
Graves barn

-- VACANT LOT --

Adams St @ Boland St S009 002
R; 0.56 ac
Hitchcock



Federal / Folk Victorian / Queen Anne
elements

three stories asymmetrical
hip asphalt shingles
mortise and tenon
clapboard brick piers
porch full front one story
ca. 1820 altered 1850 and 1880

contributing

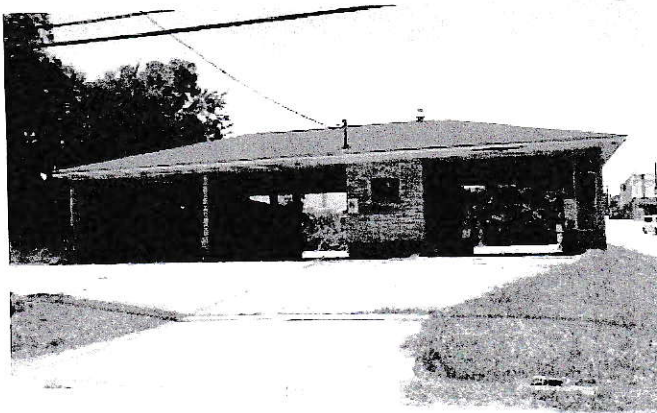
305 Adams St S004 043
R3; 0.55 ac



Craftsman elements
ca. 1910 one story symmetrical
clapboard stone foundation
gable on hip asphalt shingles
porch one story full front
recessed and supported by
stone piers - one continuous
low arch across the whole front

contributing

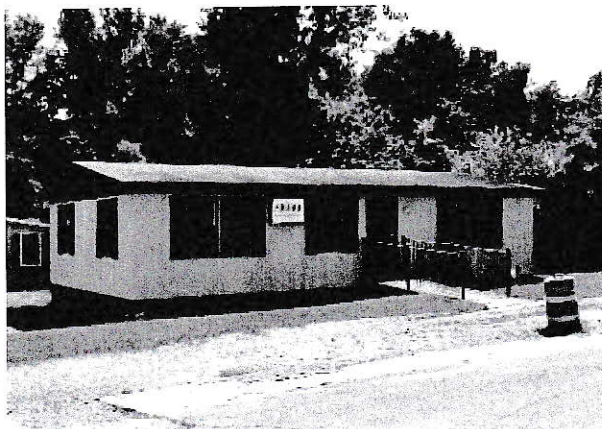
77 Adams St S008 049
E2; 0.52 ac



Noncontributing
Intrusion

354 Adams St
C3; 0.32 ac
Car wash

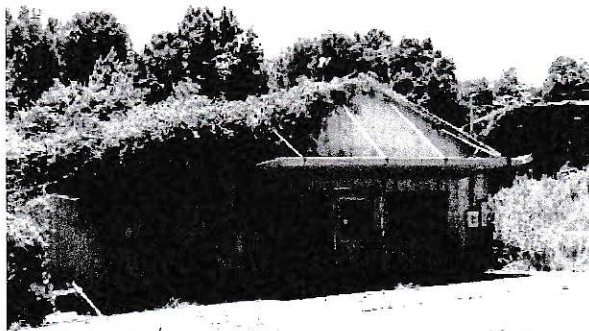
S003 108



Noncontributing
Intrusion

Adams St @ Spring St
C3; 0.12 ac
Garrard Insurance

S004 041

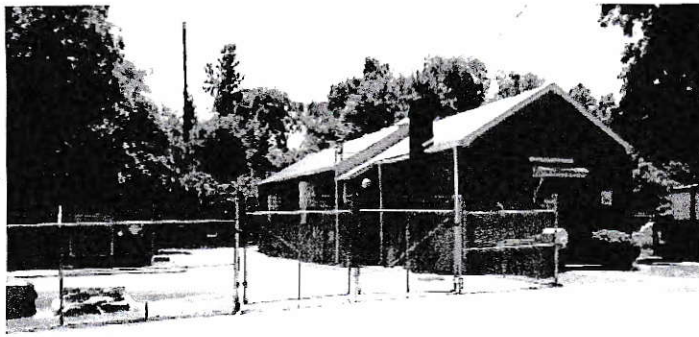


Front gable
commercial / industrial
ca. 1950 metal roof and sides

contributing

371 Adams St
C3; 0.25 ac
Meeks

S004 042



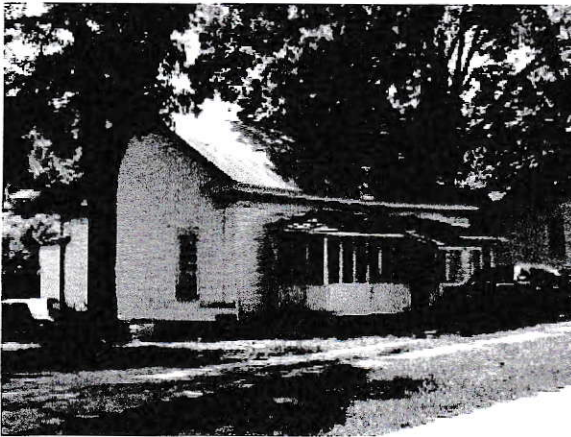
noncontributing

449 Adams St

S004 025

E9; 0.31 ac

AT&T



Greek Revival elements
ca. 1850 symmetrical one story
side gable metal standing seam
vinyl siding
mortise and tenon construction
porch one story full front shed
double hung sash 2/2

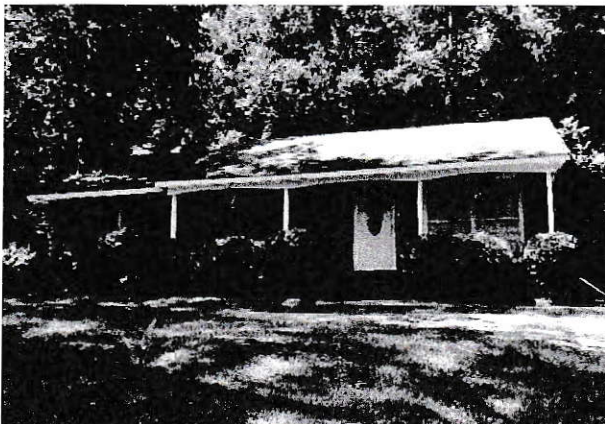
contributing

469 Adams St

S004 024

R3; 0.49 ac

Patel



ca. 1970 Ranch
brick veneer front- sides and rear
siding
side gables asphalt shingles
8/8 double hung sash windows

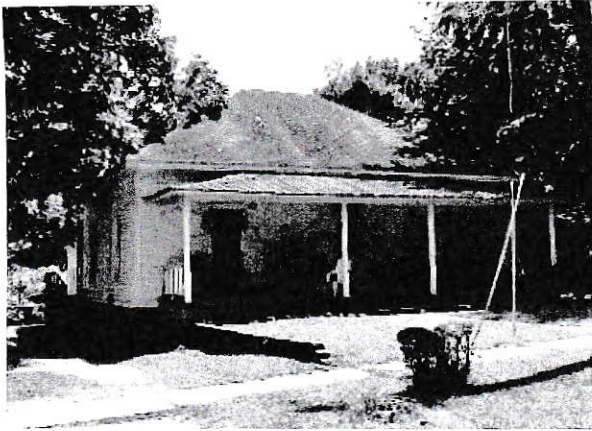
contributing

470 Adams St

S003 098

R3; 0.56 ac

Grable



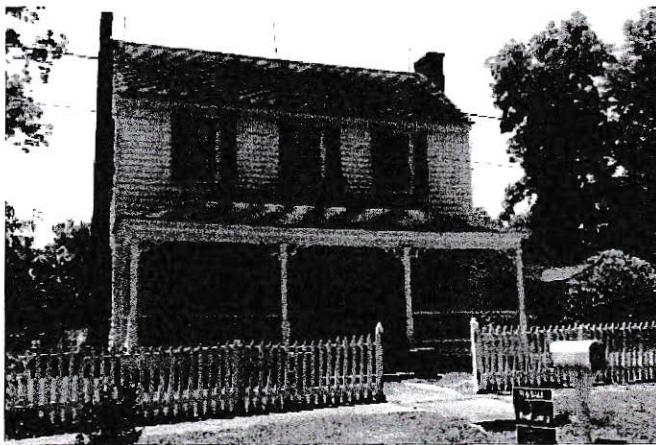
New South Cottage
ca. 1890 one story symmetrical
hip asphalt shingles
clapboard brick piers infilled
porch full front one story
double hung sash 6/6 windows
contributing

485 Adams St

S004 023

R3; 0.57 ac

Harrouk



Plantation Plain
ca. 1820 symmetrical two story
end gable asphalt shingles
mortise and tenon construction
porch full front one story
double hung sash 9/9 windows

contributing

545 Adams St

S004 003

R3; 0.52 ac

Matson/Lambert



noncontributing

565 Adams St

S004 002

R3; 0.33 ac

Buchanan



589 Adams St
R3; 0.38 ac
Clifford Brown

S004 001

ca. 1966 Ranch
brick side gable
metal roof front gable located on
1/3 of front
double hung sash 6/6 windows with
decorative panels under windows
contributing



12333 Augusta Hwy
C; 0.22 ac
Parekh - Quick Stop

S008 018

noncontributing
Intrusion



14 Boland St
R; 0.52 ac
Simmons

S003 034

Greek Revival elements
ca. 1830 two stories symmetrical
side gable asphalt shingles
mortise and tenon construction
clapboard brick piers infilled
porch full front one story
double hung sash 6/6

contributing



21 Boland St S003 023
E; 0.85 ac
Pierce Memorial Methodist Church

Early Classical Revival
ca. 1927 symmetrical one story
front gable asphalt shingles
exterior brick
stone foundation
portico two story

contributing

-- VACANT LOT --

Boland St S003 024
C; 0.74ac
Bank of Hancock, Parking lot

-- VACANT LOT --

Boland St S003 033
E; 0.66 ac
Owned by Pierce Methodist Church



52 Boland St S003 032
R; .68 ac
Hudson

Greek Revival elements
colonial revival porch
ca. 1820 altered ca. 1870
two stories front gable
metal tin roof
clapboard
porch one story full width shed
double hung sash 6/6

contributing



noncontributing
Intrusion

156 Boland St

S003 117

R; 0.39 ac

Harrouk



business office
ca. 1940 one story symmetrical
front gable metal roof
brick
double hung sash 1/1 windows

contributing

161 Boland St

S003 122

C; 0.43 ac

"Board of Directors"



Second Empire
Queen Anne Cottage
ca. 1890 one and a half stories
mansard roof metal
vinyl siding
porch one story partial front
double hung sash 2/2 windows

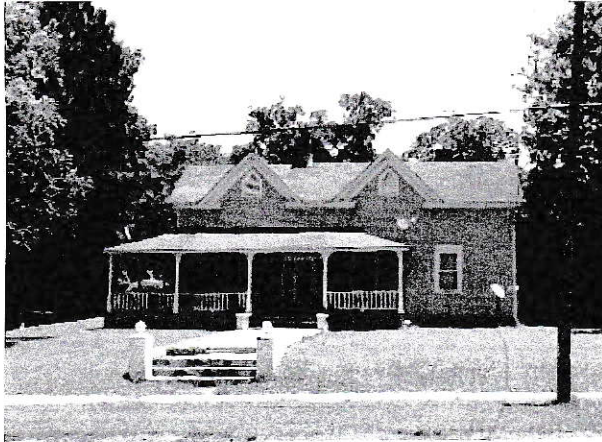
contributing

164 Boland St

S003 018

R; 0.15 ac

Hattaway



235 Boland St

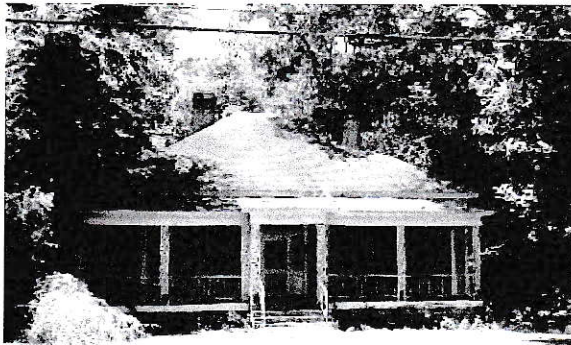
S009 001

R; 0.39 ac

Gaddis

Folk Victorian elements
ca. 1890 asymmetrical one story
side gable asphalt shingles
vinyl siding brick foundation
porch one story partial front with
wrap around
double hung sash 1/1 and 6/6

contributing



246 Boland St

S004 047

R; 0.37 ac

Bacon Land Co

New South Cottage
Greek Revival elements
ca. 1900 one story symmetrical
hip asphalt shingles
vinyl siding brick piers infilled
porch one story full front
double hung sash 6/6

contributing



251 Boland St

S009 006

R; 0.79 ac

Patel

Folk Victorian elements
ca. 1890 one and a half stories
symmetrical side gable asphalt sing:
vinyl siding brick foundation
porch one story full front hip roof
double hung sash 2/2

contributing



271 Boland St

S009 007

R; 1.06 ac

Williams

Folk Victorian elements
Colonial Revival elements
ca. 1890 symmetrical two stories
hip asphalt shingles
clapboard brick foundation
porch one story full front
and wrap around hip roof
double hung sash 2/2 windows

contributing



272 Boland St

S004 048

R; 1.55 ac

Hitchcock

Gothic Revival
ca. 1853 asymmetrical
two stories front gable
mortise and tenon construction
board and batten brick foundation
porch one story full front shed
double hung sash 2/2 windows
porch supports - decorative
cutouts

contributing



291 Boland St

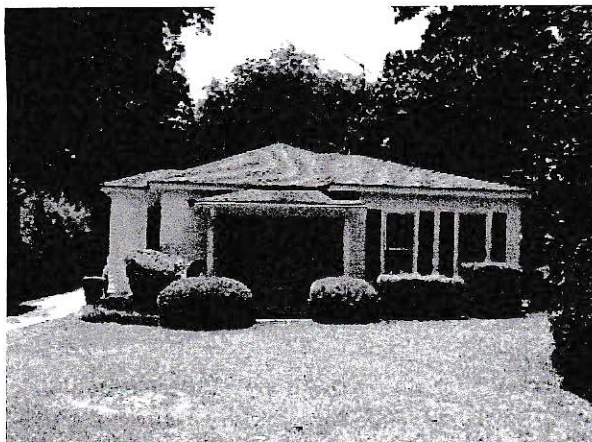
S009 008

R; 1 ac

Gaissert

Prairie elements
Craftsman elements
ca. 1910 symmetrical two stories
hip standing seam roof
pebble dash exterior
porch one story full front
double hung sash 6/1

contributing



Bungalow
ca. 1935 one story asymmetrical
hip asphalt shingles
vinyl siding brick foundation
porch one story partial front hip
roof
double hung sash 6/6 windows
contributing

292 Boland St

S004 049

R; 0.74 ac

White



Colonial Revival elements
ca. 1930 one and a half stories
symmetrical side gable
asphalt shingles
vinyl siding brick foundation
porch one story partial front
double hung sash 6/6

contributing

306 Boland St

S004 050

R; 1.71 ac

Fisk



Craftsman elements
ca. 1910 one story asymmetrical
cross gable asphalt singles
permastone knee braces at eaves
porch one story full front with gable
double hung sash 6/1 windows

contributing

317 Boland St

S009 010

R; 0.5 ac

Chawla



363 Boland St

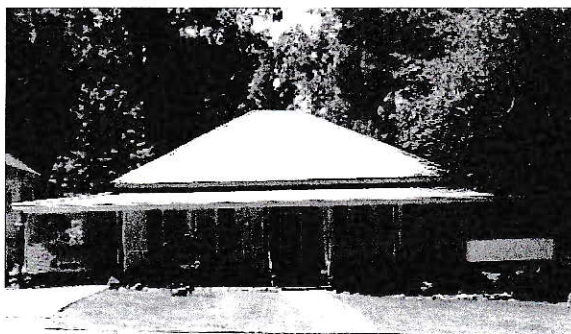
S009 013

R3; 0.17 ac

Lawrence

Front gable
ca. 1930 asymmetrical one story
asbestos siding
porch full front one story
double hung sash 6/6 windows

contributing



12404 Broad St

143B 004

R3; 0.94 ac

Cobb

New South Cottage Ca.1900
center hall two rooms deep
one story square plan
hip standing seam roof
balloon frame aluminum siding
double-hung sash 1/1 windows
porch - full front shed, wrap-around shed

contributing



12416 Broad St

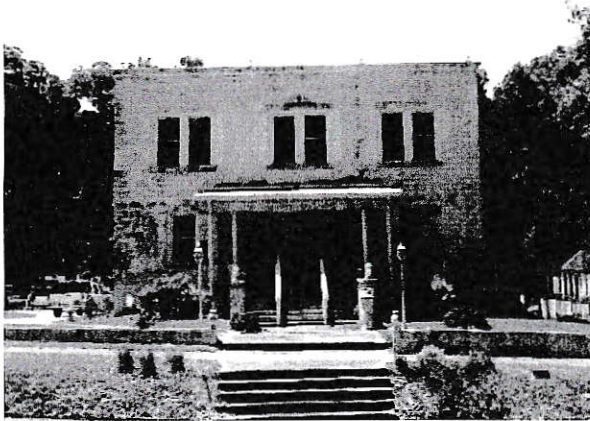
143B 005

R3; 0.34 ac

Harrouk

Free Classic Victorian Ca.1880
center hall one room deep
one story, hiproof, asphalt shingle
balloon framing, clapboard, brick
piers
double hung 6/6 windows
full front shed porch

contributing



12440 Broad St

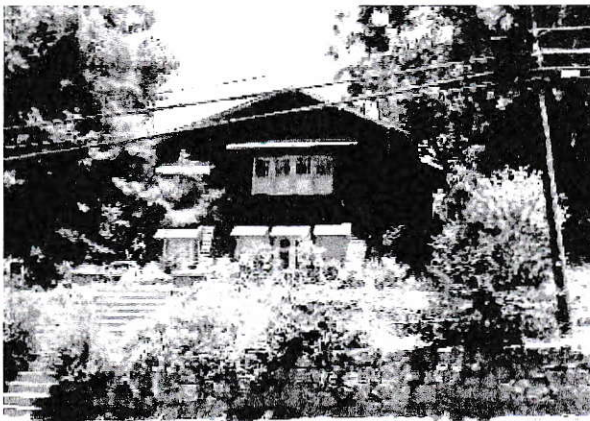
143B 006

R3; 0.78 ac

Vardeman-Mayer

Colonial Revival Ca. 1900
two story on front three story back
concrete block construction
flat roof, double-hung sash 1/1
porch altered ca. 1990
roof balustrade removed 1990

contributing



12445 Broad St

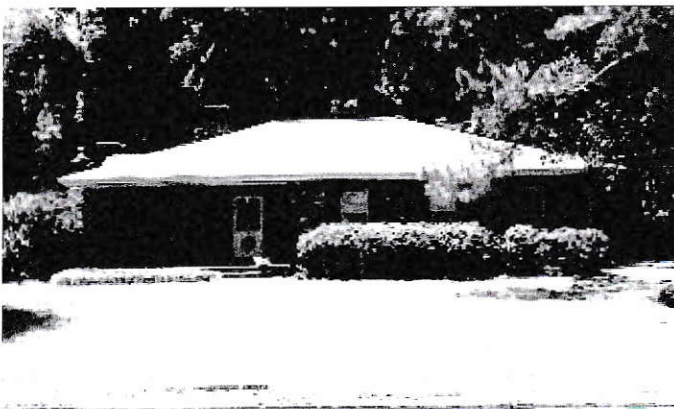
S003 083

R3; 0.56 ac

Ransom

Exotic Revival - Swiss Chalet
Ca. 1920
two story asymmetrical
front gable asphalt shingle
balloon frame wood shingle siding
double-hung sash 4/1 windows

contributing



12470 Broad St

S003 088

R3; 0.58 ac

Birdsong/Haywood

ca. 1951 Ranch one story brick
hip roof asphalt shingles
double hung sash 6/1 front
windows and 8/8 side windows

contributing



12471 Broad St
R3; 0.86 ac
Sarah Frank Little

S003 084

Rossiter - Little House
Ca.1795 Greek Revival elements
center hall one and a half story
mortise and tenon construction
beveled clapboard siding
flush board siding under porch
asphalt shingles
shed porch between two wings
double-hung sash 6/9 and 6/6 windows
three front dormers

contributing



12490 Broad St
R4; 1.47 ac
Haywood

S003 089

ca.1920 Federal Revival elements
1 story vinyl siding
brick foundation
double hung sash 6/6 windows
1 story entrance porch front gable

contributing

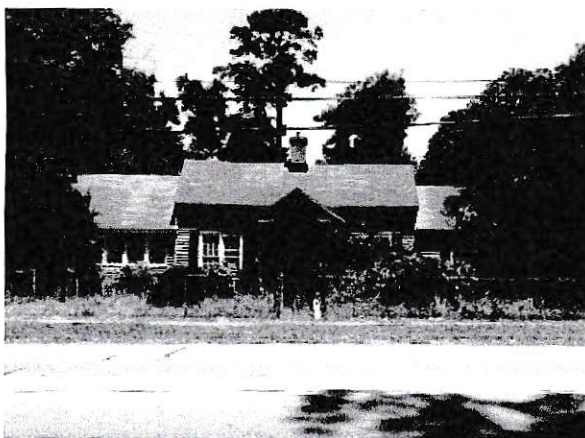


12491 Broad St
R3; 0.52 ac

S003 085

Queen Anne Cottage Ca. 1880
one story, asymmetrical facade
balloon framing clapboard siding
three interior chimneys
hip roof asphalt shingles
front gable with bay window
shed porch on right side of front
double-hung sash 4/4 and 6/6 windows

contributing



12511 Broad St

S003 086

R3; 0.55 ac

Roberts

saddle bag form Ca. 1820
Greek Revival and Colonial Revival
elements
one story symmetrical side gable
mortis and tenon construction
beveled clapboard
small entrance arched porch on front
double hung sash 9/9 windows
asphalt single

contributing



12525 Broad St

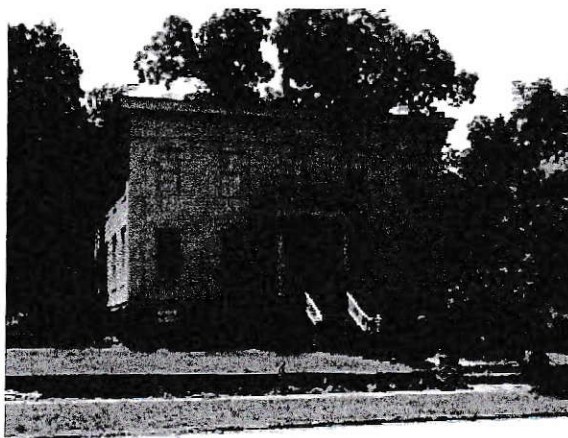
S003 075

R3; 0.19 ac

Roberts

ca. 1900 Craftsman elements
1 story center hall square plan
roof metal standing seam 1/1 windows
clapboard beveled siding
brick piers one story porch

contributing



12530 Broad St

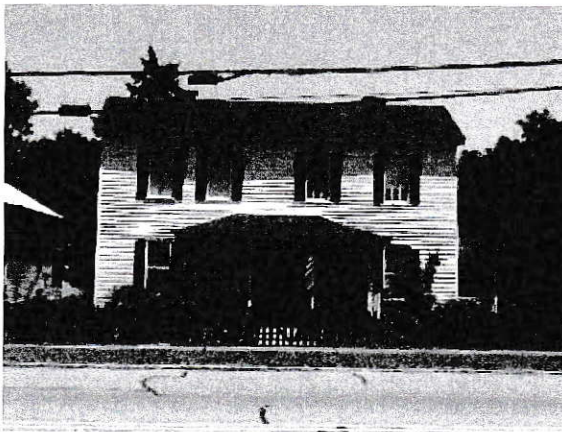
S003 090

R4; 1.01 ac

Bird-Campbell

ca. 1834 Greek Revival
3 stories center hall square plan
clapboard beveled siding flat roof
mortis-and-tenon construction
1 story entry front porch
full shed rear porch
double hung sash 6/6 windows
granit raised basement

contributing



ca. 1820 Plantation Plain
asymmetrical front 2 stories
side gable asphalt shingles
mortis-and-tenon construction
brick piers foundation
double hung sash 6/6 windows

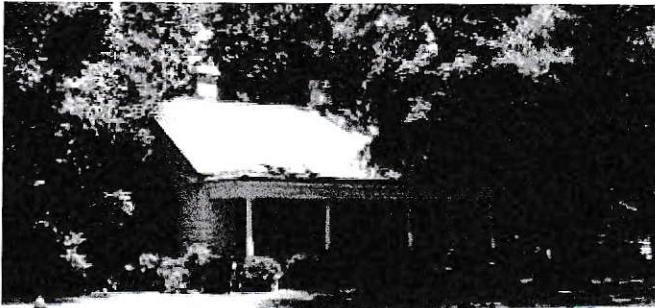
contributing

12533 Broad St

S003 076

R4; 0.22 ac

Carter Watkins



ca. 1840 Greek Revival Cottage
asymmetrical front one story
metal roof shed porch
interior chimney
double-hung sash 6/6 windows
aluminum siding

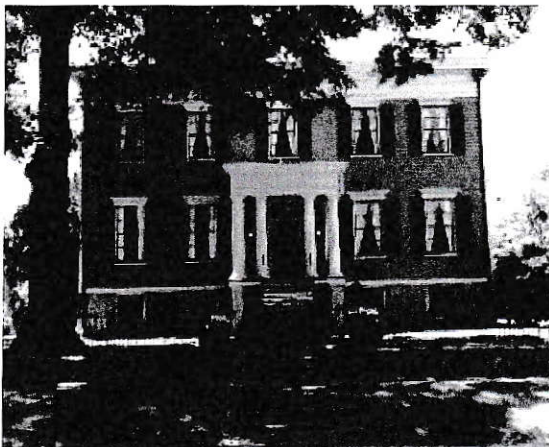
contributing

12557 Broad St

S003 074

R3; 0.3 ac

Hitchcock law office



ca. 1830 Transitional Federal
to Greek Revival 3 stories
center hall mortis-and-tenon
clapboard siding granite basement
1 story entrance porch
double hung sash 6/6 windows

contributing

12560 Broad St

S003 095

H3; 0.98 ac

Sayre-Sassnett



12588 Broad St

S003 096

R3; 0.44 ac

Carter Watkins

ca. 1920 English Vernacular Revival
bungalow side gable one story
asymmetrical front asphalt shing
weatherboard clapboard
brick foundation small entry porch
one side masonry porch with arches

contributing



12595 Broad St

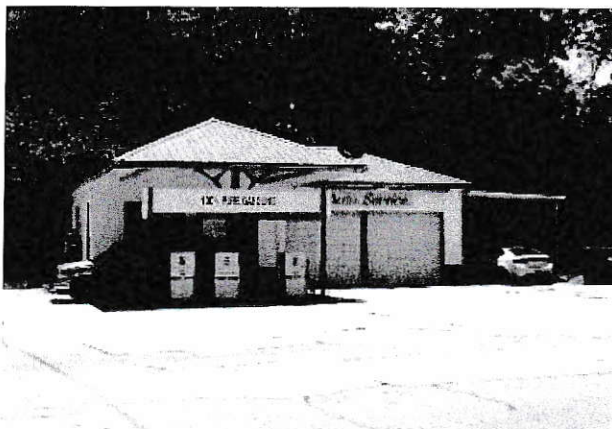
S003 068

C3; 0.89 ac

Rachels Auto Service

ca. 1975
brick facade and concrete block
sides and rear
flat roof

contributing



12600 Broad St

S003 097

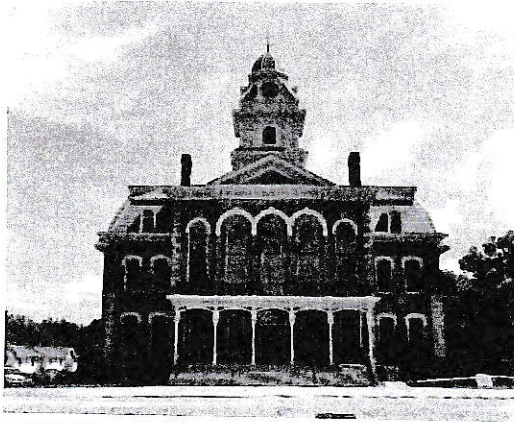
C3; 0.16 ac

Hyman Auto

ca. 1940 service station

one story masonry asymmetrical
hip roof asphalt shingles

contributing



12630 Broad St S003 100
E; 0.63 ac
County Courthouse

ca. 1883 Second Empire three story
Parkins and Bruce Architects
symmetrical Mansard roof
Reconstructed after 2014 fire

contributing



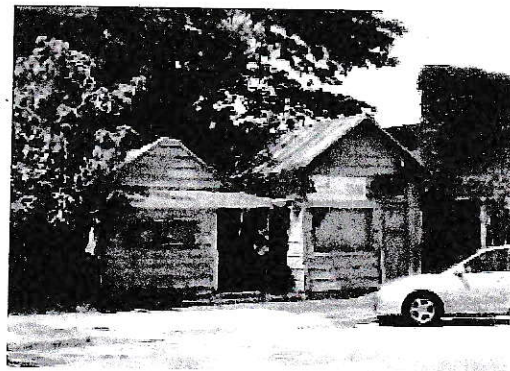
12664 Broad St S003 102
C4; 1.43 ac
Drummers Home

ca. 1850 Greek Revival elements
Drummer's home brick
end gables with brick stepped parapet
asphalt shingles
full two story porch
12/12 double hung sash windows

contributing



12665 Broad St S003 064
C; 0.83 ac
Davenport



Broad street
two small front gable buildings
left-ca. 1920 right-ca. 1880
metal tin roofs fiberboard siding
contributing



12671 Broad St

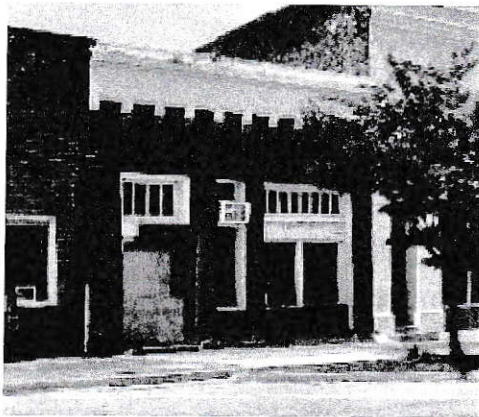
S003 048

C; 0.08 ac

Sparta Ishmaelite

ca. 1890 one story commercial
symmetrical masonry construction
flat roof

contributing



12675 Broad St

S003 049

E; 0.08 ac

Center for Community Development

ca. 1920 one story commercial
asymmetrical brick construction
a single window and 2 plate glass
windows with transoms above all
openings
decorative corbelling

contributing



12681 Broad St

S003 050

C; 0.1 ac

Old Chamblee Western Union

ca. 1870 two stories commercial
asymmetrical two doors 4 covered
windows with Greek Key design
on lintels
plate glass windows on street level
single door/ staircase on left to
upstairs
brick masonry construction

contributing



12681 Broad St S003 051
C; 0.06 ac
Sparta Flower Shop

ca. 1930 one story commercial
brick front altered
detail corbelled brick cornice
contributing



12688 Broad St S003 103
E3; 0.09 ac
Police Station

ca. 1850 two stories front gable
asymmetrical mortis-and-tenon
clapboard covered faux brick
metal roof double hung sash 9/6 window
Greek Revival details interior
contributing



12691 Broad St S003 052
C; 0.1 ac
Adrian

ca. 1920 one story commercial
flat roof stone exterior
two bays with dual leaf doors
cast iron front facade stamped
;Geo. L. Mesker & Co.
Architectural Iron Works
Evansville, Ind.

contributing



12694 Broad St

S003 104

C3; 0.08 ac

Beauty Supply

ca. 1930 commercial one story
burned features corbelled cornice
brick

contributing



12695 Broad St

S003 053

C3; 0.1 ac

Webster - Rooms U Love

ca. 1904 one story brick commercial
ornate facade large arched opening
with recessed entrance and original
double front doors. brick pilasters
at corners with egg and dart molding
at capital level

contributing



12698 Broad St

S003 105

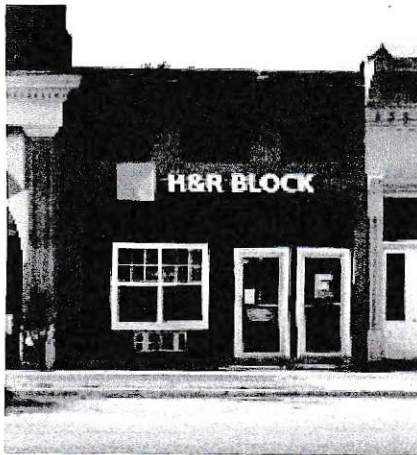
C3; 0.17 ac

Webb

ca. 1920 one story commercial
brick parapet gable
asymmetrical one door

six rectangular insets with brick
corbeling

contributing



ca. 1900 one story commercial
asymmetrical one door brick stucco
altered facade three rectangular insets
contributing

12701 Broad St S003 054
C; 0.15 ac
Webster – H&R Block



ca. 1900 one story commercial
symmetrical double doors
ornate round headed parapet
staggered brick corbeling and
cast iron columns
contributing

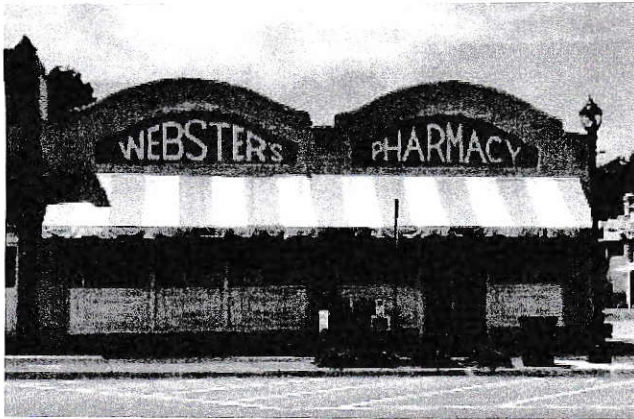
12705 Broad St S003 055
C3; 0.09 ac
Webster



ca. 1850 two stories commercial
front gable Italianate elements
cast iron columns
recessed door and three single
windows with corbeled lintels
on first floor
second floor four single windows
with lintels double hung shas 6/6
brackets and pendants located under
eaves

12706 Broad St S003 106
C3; 0.21 ac
Griffin

contributing



12707 Broad St

S003 056

C; 0.1 ac

Webster's Pharmacy

ca. 1920 one story commercial
asymmetrical one door
brick front has two
roundheaded arched parapets
contributing



12722 Broad St

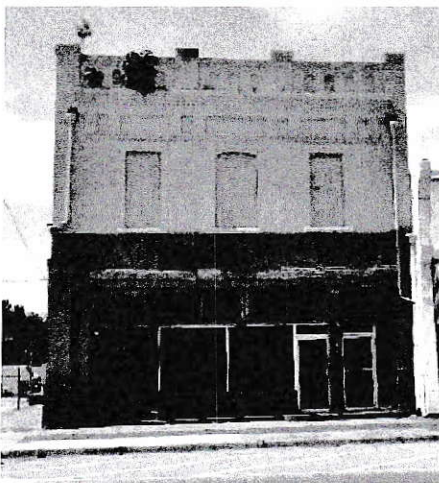
S003 110

C3; 0.12 ac

Ferguson Bldg

ca. 1903 two stories commercial
symmetrical flat roof
stone facade and brick sides
front has granite pilasters
second floor has three windows
middle window has arched header
A pointed gable is centrally
located at roof over center window
"1903 Ferguson Block"

contributing



12723 Broad St

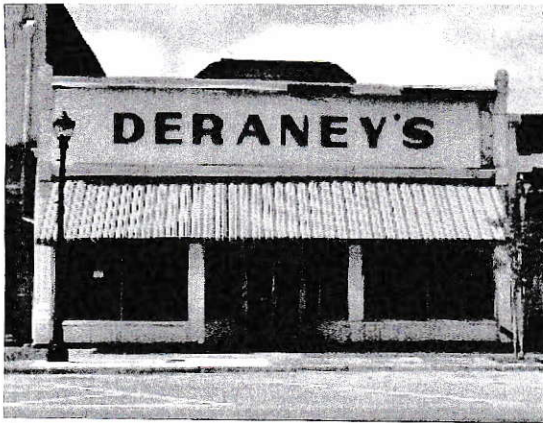
S003 042

C4; 0.08 ac

Rozier Bldg

ca. 1920 two stories commercial
asymmetrical parapet roof
brick three enclosed windows on facade
granite lintels Decorative corbeling
and insets above windows

contributing

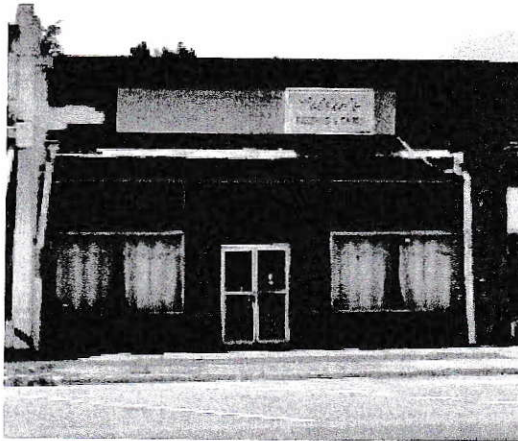


12729 Broad St
C4; 0.14 ac
Deraney Dept Store

S003 043

ca. 1900 one story commercial
symmetrical parapet gable
brick front facade has 2 plate glass
windows aluminum siding upper
cast iron finials with shell motif

contributing

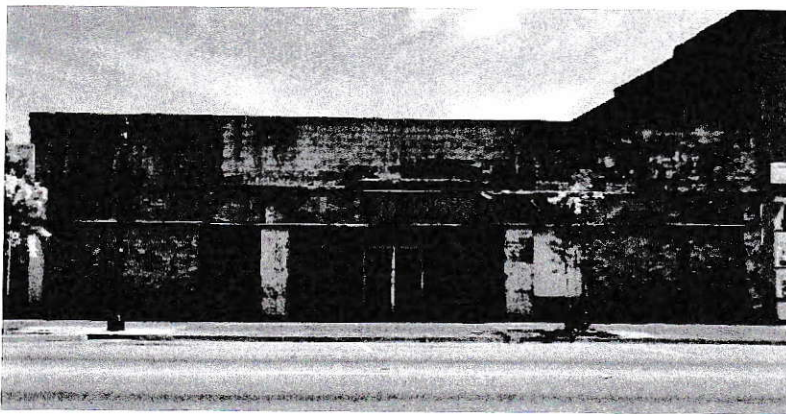


12735 Broad St
C3; 0.09 ac
Bolden

S003 044

ca. 1900 one story commercial
parapet gable symmetrical brick
plate glass front with recessed
door centered cast iron supports

contributing

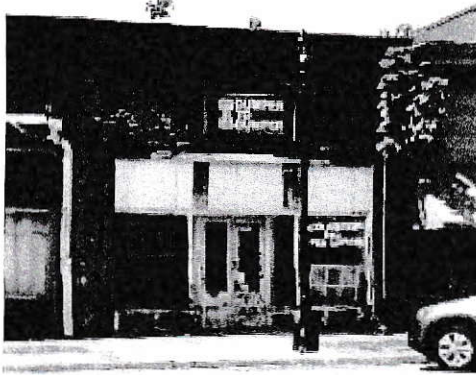


12736 Broad St
C3; 0.15 ac
Bundrage

S003 111

ca. 1920 one story
commercial ruin
cast iron supports
infilled with bricks

contributing

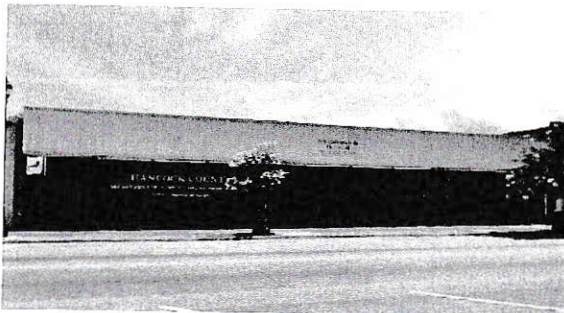


12739 Broad St
C3; 0.14 ac
Bumper To Bumper

S003 045

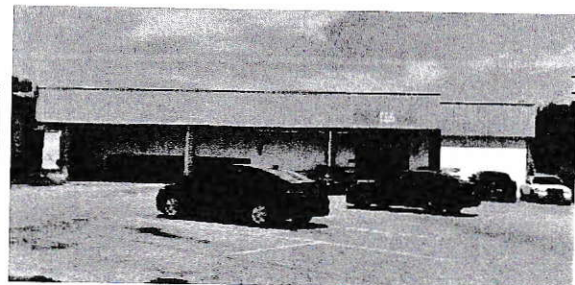
ca. 1900 one story symmetrical
commercial brick parapet gable
large rectangular corbelled inset

contributing



12744 Broad St
C3; 0.63 ac
Garrett's Red & White
noncontributing

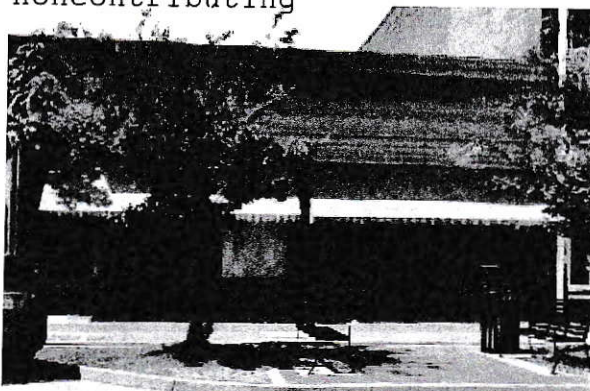
S003 112



Intrusion

Spring St entrance

noncontributing



12745 Broad St
C3; 0.14 ac
Sparta Hardware

S003 046

Neoclassical Revival elements
ca. 1890 one story commercial
parapet gable brick symmetrical
front facade - two recessed doors
cast iron cornice with applied
pressed tin ornamentation
modillion and dentil molding
and applied swags and ribbon

contributing



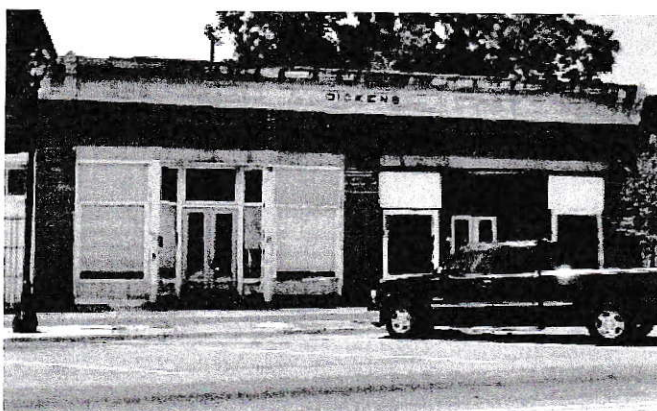
12755 Broad St
C3; 0.41 ac
Hattaway Furniture

S003 047

Italianate elements

ca. 1870 two stories commercial
symmetrical parapet gable brick
windows covered
eight windows grouped as 3 - 2 - 3
decorative circular vents located over
each window

contributing



12761 Broad St

S003 028

12771 Broad St

S003 029

C3; 0.10 ac

Kennedy (bldg. split into 2 parcels)

ca. 1900 one story commercial
symmetrical brick
front 2 bays cast iron supports
cast iron cornice adorns eaves
six insets with brick corbels

contributing



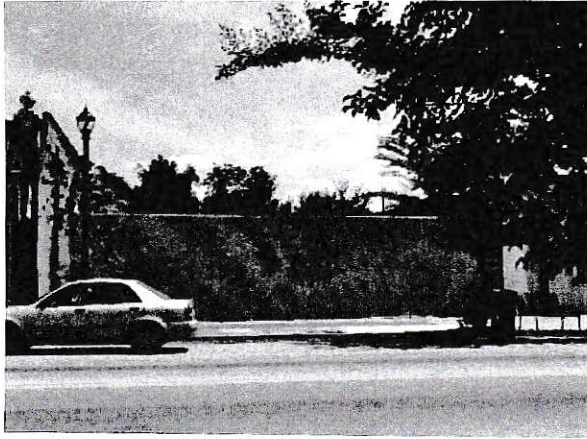
12762 Broad St

S003 113

C3; 0.19 ac

Hargrove

noncontributing
Intrusion



vacant lot of burned shop
being converted into City
picnic park

12776 Broad St S003 114
E1; 0.28 ac
Discount Floral (burned)



ca. 1905 one story commercial
symmetrical brick plate glass- door-glass
small parapet with 1905 Binion

contributing

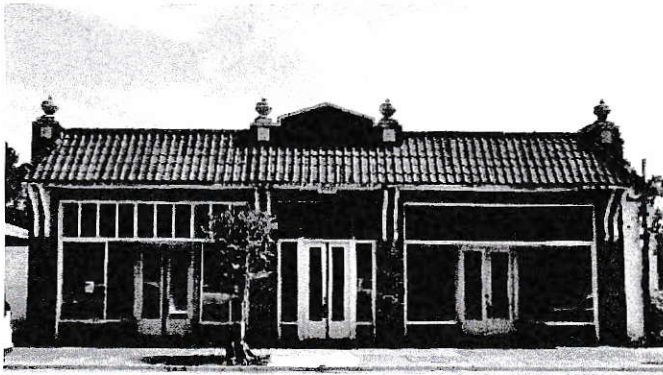
12777 Broad St S003 030
C3; 0.06 ac
Yisrael



ca. 1900 one story commercial brick
symmetrical parapet gable
cast iron supports decorative cornice and
decorative zig-zag corbelling
finials at corner of roof

contributing

12781 Broad St S003 031
C3; 0.05 ac
Kim - Mr. Hong Kong



12782 Broad St

S003 116

C3; 0.57 ac

Perivier

Neoclassical elements

ca. 1920 one story commercial
symmetrical two store fronts
center gable four urns on roof
terra cotta roof of overhang

contributing



12798 Broad St

S003 115

C3; 0.09 ac

Edussuriya

ca.1927 one story symmetrical
converted from gas station to
current use
stone with wood infill

contributing



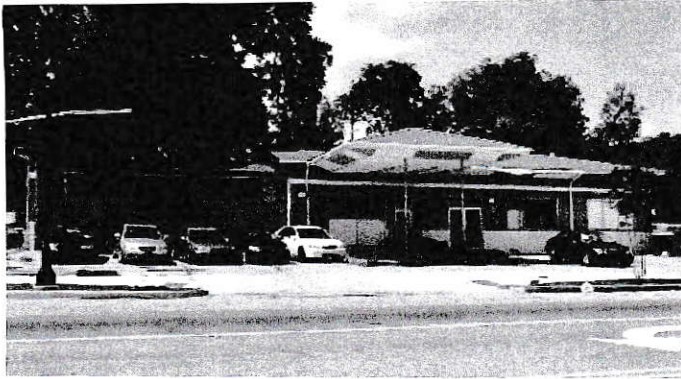
12820 Broad St

S003 123

C3; 0.54 ac

Valero/Subway

noncontributing
Intrusion



ca. 1965 midcentury modern
hip metal roof
concrete block
single plate windows

contributing

12825 Broad St S003 025

C3; 0.16 ac

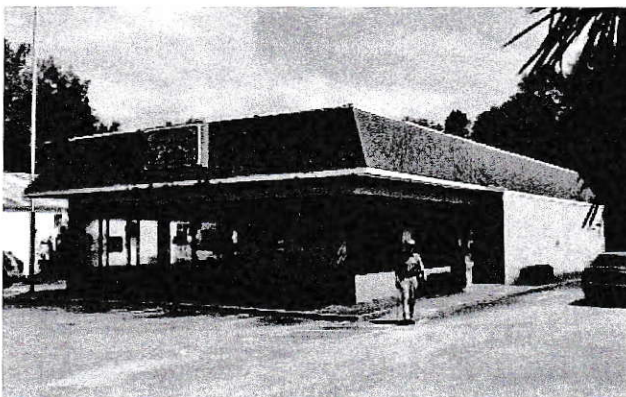
Sparta Meat & Produce

0 Broad Street S003 026

C3; 0.12 ac

Parking Lot – Bank of Hancock Co

Vacant



noncontributing
Intrusion

12834 Broad St S003 124

C3; 0.63 ac

Central Park



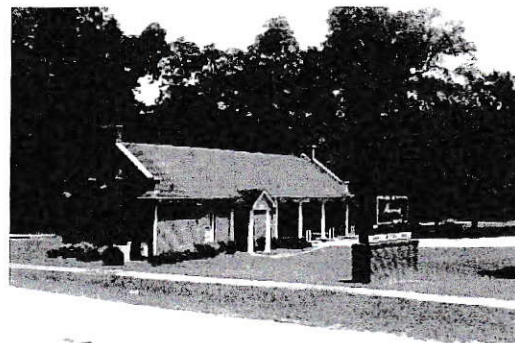
12855 Broad St S003 027

C4; 1.49 ac

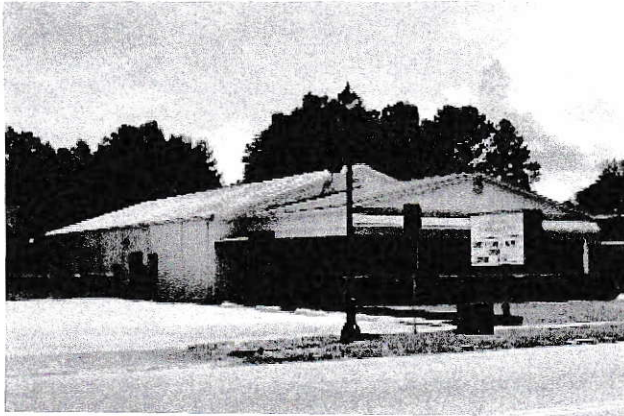
Bank of Hancock County

ca. 1970 brick Georgian Re-revival
asphalt shingles end parapet gables
9/9 double hung sash windows
front entry porch with gable

Drive-thru on Hamilton St



contributing



noncontributing
Intrusion

12860 Broad St S003 125
E3; 0.90 ac
Washington EMC



Colonial Revival elements
ca. 1940 two stories post office
symmetrical brick hip roof
double hung sash windows 12/12
pedimented portico has marble
columns

contributing

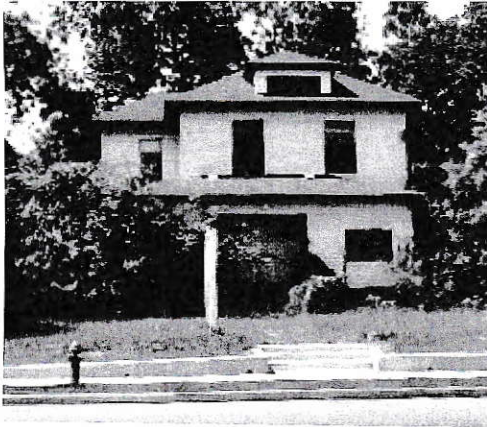
12877 Broad St S008 004
E3; 1 ac
Federal Bldg



Neoclassical Revival elements
ca. 1903 one story church
brick symmetrical hip standing seam roof
round headed windows bell tower slightly
projects

contributing

12884 Broad St S008 044
E2; 0.55 ac
Sparta Presbyterian Church



ca. 1900 two stories asymmetrical
hip roof - asphalt shingles
vinyl siding brick foundation
double hung sash 1/1 windows
porch enclosed

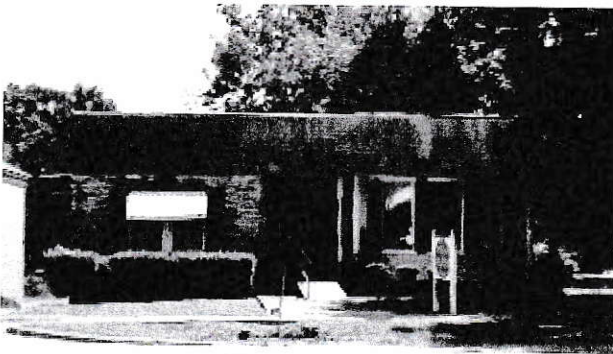
contributing

12889 Broad St

S008 005

C3; 0.32 ac

Reid



Folk Victorian elements
ca. 1890 one story asymmetrical
side gable asphalt shingles
altered from residence to commercial

contributing

12900 Broad St

S008 043

C3; 0.21 ac

Sparta Dental Assoc



Colonial Revival elements
ca. 1900 one story asymmetrical
hip asphalt shingle
vinyl siding brick pier with infill
double hung sash 1/1 windows
chimney features decorative brick
porch supported by fluted square
wood supports and columns

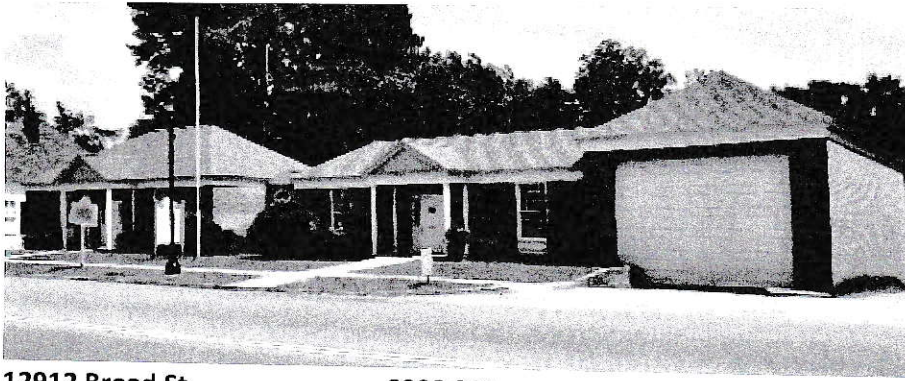
contributing

12903 Broad St

S008 006

C3; 0.47 ac

Smith



12912 Broad St
E1; 0.26 ac
Sparta City Hall

S008 042

ca. 1980
brick veneer
hip asphalt shingle
12/12 double hung
sash windows

contributing



12923 Broad St
C3; 0.63 ac
Golden Pantry

S008 007

noncontributing
Intrusion



12936 Broad St
R; 0.47 ac
Williams

S008 041

Folk Victorian elements
ca. 1880 one story asymmetrical
residence hip roof asphalt
clapboard siding
double hung sash 4/4 windows

contributing



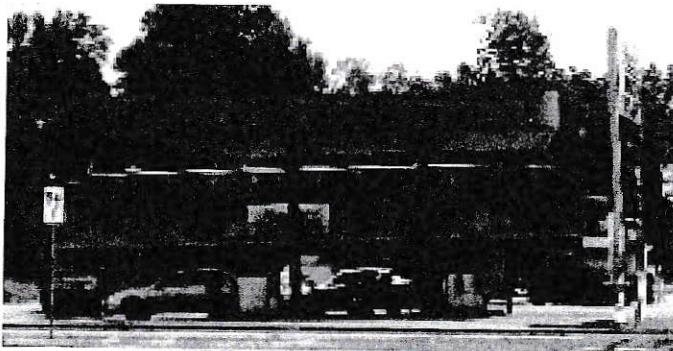
East Broad St & Augusta Hwy S008 035

E; 1.33 ac

Sparta Baptist Church

Romanesque Revival elements
R.H. Wiley architect
ca. 1916 one story symmetrical
brick hip metal standing seam
recessed front porch
paired columns

contributing



9111 East Broad St

S008 039

C; 0.65 ac

Rocky's

noncontributing
Intrusion



25 Burwell St

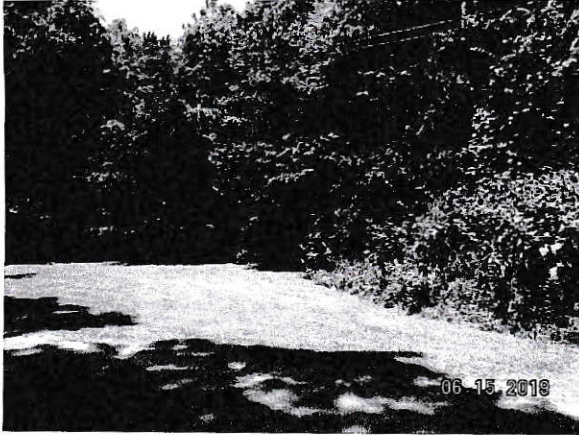
142D 042

R4; 1.51 ac

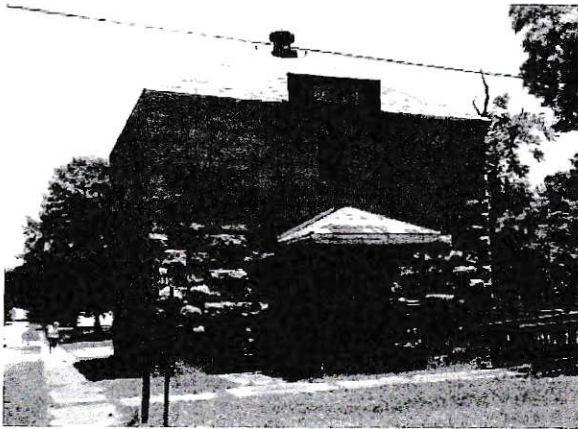
Reagin

Greek Revival elements
ca. 1830 two stories asymmetrical
clapboard double hung sash 9/9 & 4,
mortis-and-tenon
front gable and rear ell side gable
added in 1870,s

contributing



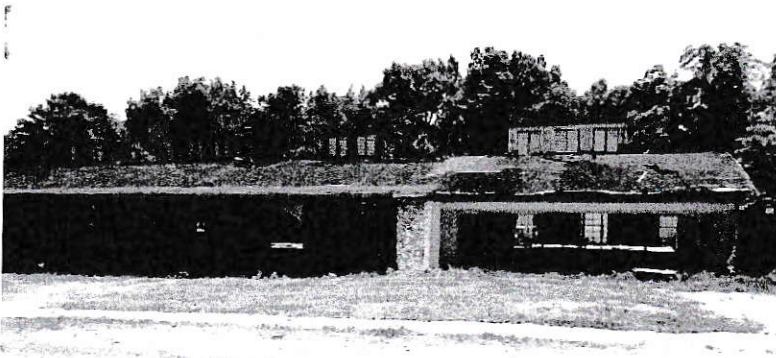
705 Burwell St
142D 043
R4; 4.43 ac
Jim Baker – vacant woods



Court St @ Adams St
Old Jail

Jail
ca. 1905 symmetrical two stories
hip metal pressed shingle roof
stone bearing exterior
porch small entry

contributing



ca. 1940 industrial
brick walls
arched barrel roof with
asphalt covering
asymmetrical
metal casement windows

contributing

75 Court St
C4; 1.32 ac
Old Duck plant

S004 028

-- ABANDONED HOUSE --

94 Court St S004 026
R3; 0.17 ac
Gentry

Ruin

Court St S004 027
R3; 0.26 ac
McNeal

Ruin

Court St S004 030
C3; 0.29 ac
Harrouk – Adams St Parking Lot

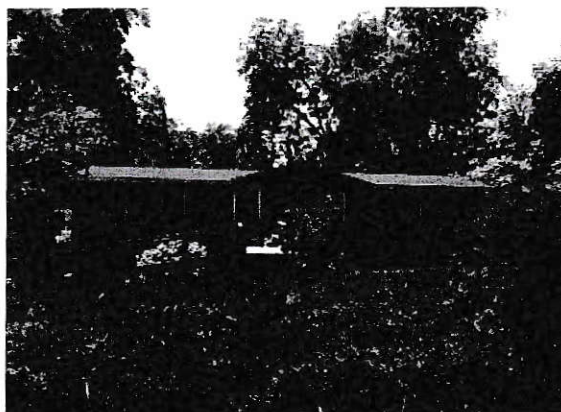
vacant

115 Court St S004 031
R3; 0.27 ac
Kendrick



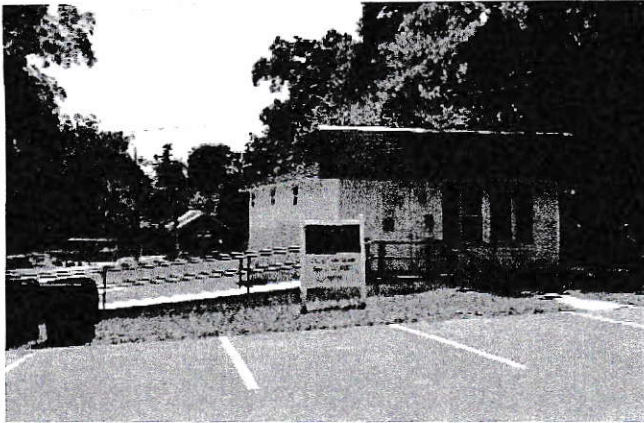
noncontributing
Intrusion

163 Court St S004 032
R4; 1.6 ac
Jones



noncontributing
Intrusion

222 Court St S004 017
R3; 0.56 ac
Brown



noncontributing
Intrusion

40 Courthouse Sq

S003 099

E; 0.5 ac

Magistrates Office



ca. 1920 business
concrete block asymmetrical
front gable metal roof
solid windows with 84 small panes
in each of the three front windows

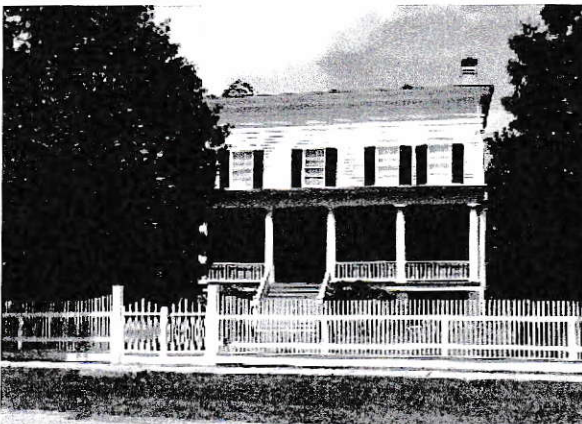
contributing

64 Courthouse Sq

S003 101

E; 0.51 ac

Old tax Commissioners Office



Greek Revival center hall
three stories flat roof
mortis-and-tenon
interior chimney
weatherboard/clapboard
double hung sash 6/6 windows
stone foundation
full front shed porch

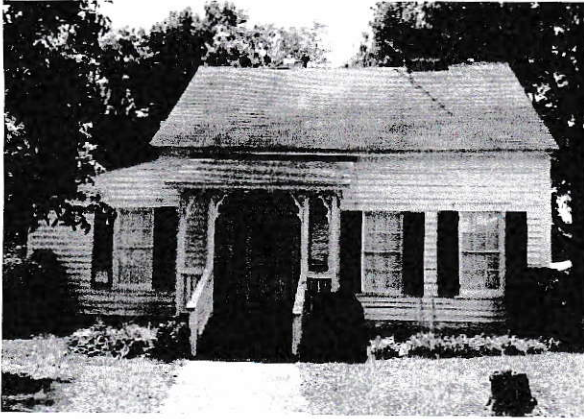
contributing

15 Elm St

S007 038

R; 0.57 ac

Currey



22 Elm St

S008 012

R; 0.57 ac

Glenn Johnson

Folk Victorian elements
ca.1840 one story asymmetrical
clapboard double hung sash 6/6 windows
mortise-and-tenon

contributing



37 Elm St

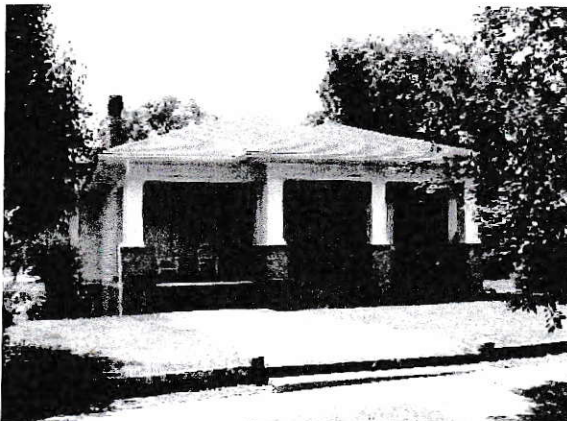
S007 037

R; 0.38 ac

Currey

ca. 1940 one story asymmetrical
brick front gable
double hung sash 6/6 windows

contributing



44 Elm St

S008 011

R; 0.56 ac

Huff

Craftsman elements Bungalow
ca.1910 asymmetrical hip roof asphalt
clapboard stone foundation
double hung sash 6/1 windows

contributing



53 Elm St

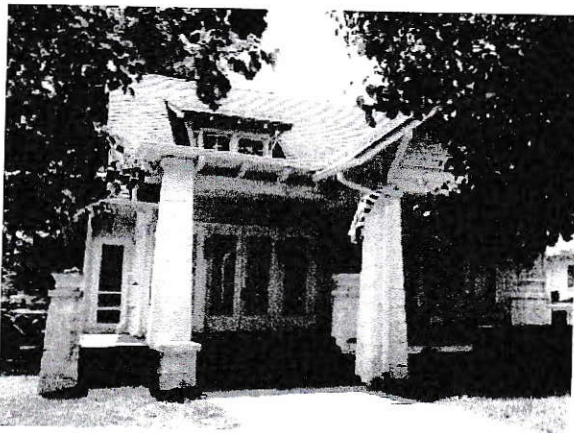
S008 013

R; 0.75 ac

Glenn Johnson

Folk Victorian elements
ca. 1890 one and half stories
asymmetrical clapboard
porch full front and wrap around
double hung sash 2/2
shingles in gable ends

contributing



60 Elm St

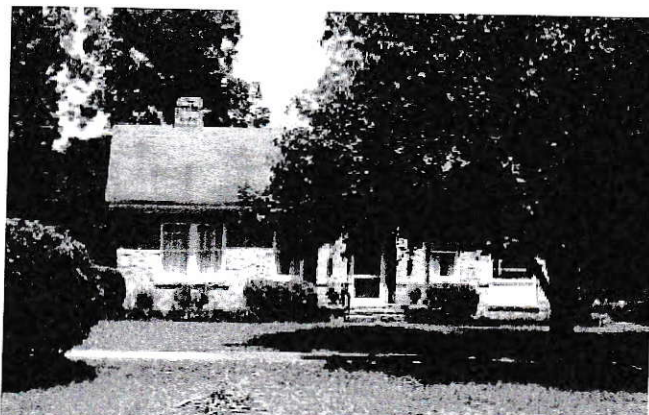
S008 010

R; 0.55 ac

Glenn Johnson

Craftsman elements and Shingle elements
Bungalow
ca. 1919 one and a half stories
side gable asphalt shingles
verandah front full front gable
double hung sash 6/1 windows

contributing



71 Elm St

S008 014

R; 0.74 ac

Yarbrough

Craftsman elements Bungalow
ca. 1930 one story asymmetrical
side gable asphalt shingle
stone
double hung sash 6/1 windows

contributing



76 Elm St

S008 009

R; 1.16 ac

Glenn Johnson

Craftsman elements Bungalow

ca.1920 one story stone

contributing

asphalt shingle Double hung sash 6/1 windows

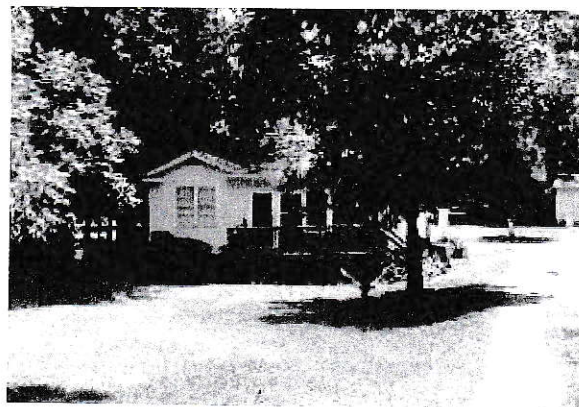
-- VACANT LOT --

91 Elm St

S008 015

R; 0.84 ac

Currey



105 Elm St

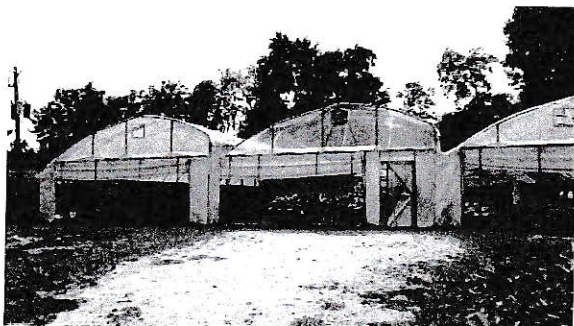
S008 016

R; 0.65 ac

Burgamy

American foursquare
circa 1910 two stories
vinyl siding brick foundation
full width verandah
double hung sash 6/6 windows

contributing



112 Elm St

S008 008

C; 0.53 ac

Currey greenhouse

Vacant



123 Elm St

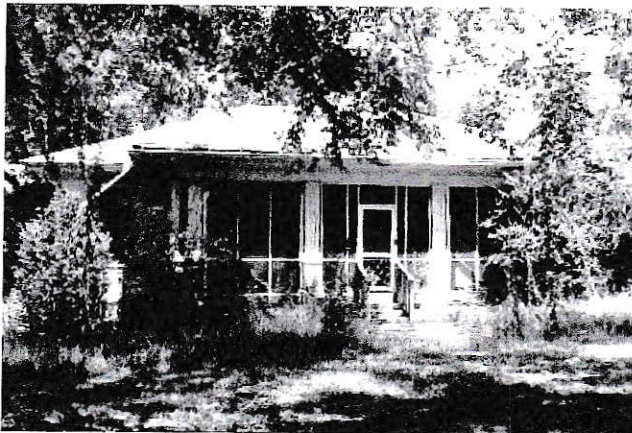
S008 017

R; 0.6 ac

Karen West

Italianate elements
ca. 1870 center hall two stories
hip asphalt shingles
mortis and tenon construction
clapboard brick foundation
one story verandah full width
double hung sash 6/6 windows

contributing



245 Elm St

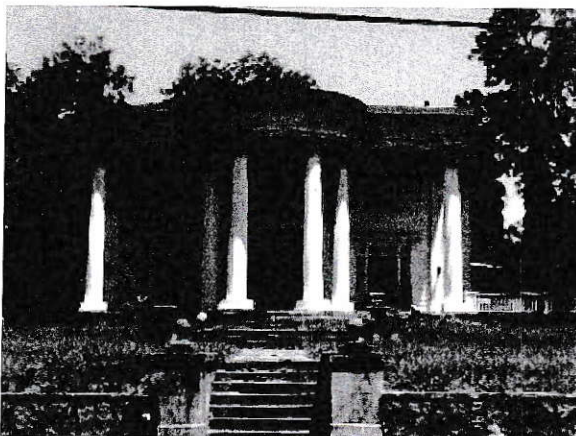
S008 038

R; 0.45 ac

Smith

New South Cottage
circa 1910 one story
vinyl siding
hip asphalt shingles
full porch square columns on
brick piers

contributing



201 Hamilton St

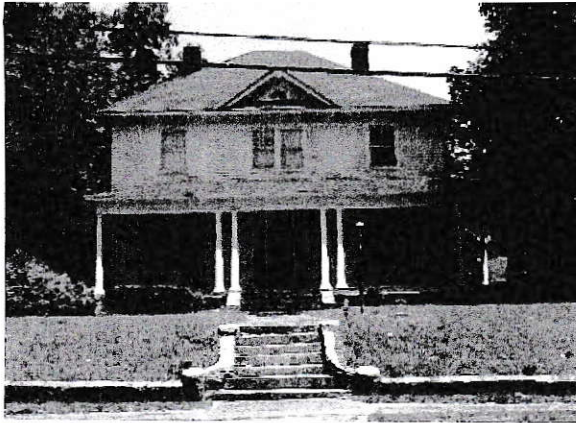
142D 040

R4; 4.3 ac

Burwell house

Neoclassical
ca. 1906 two stories symmetrical
clapboard Corinthian columns
double hung sash 1/1

contributing



229 Hamilton St

S003 001

R3; 0.62 ac

Teresa Hollis

Colonial Revival elements
ca. 1910 two stories symmetrical
hip asphalt shingles
clapboard brick foundation
one story full porch on front and
continues on right side
windows double hung sash 2/1
small fanlight in small front roof
gable

contributing



230 Hamilton St

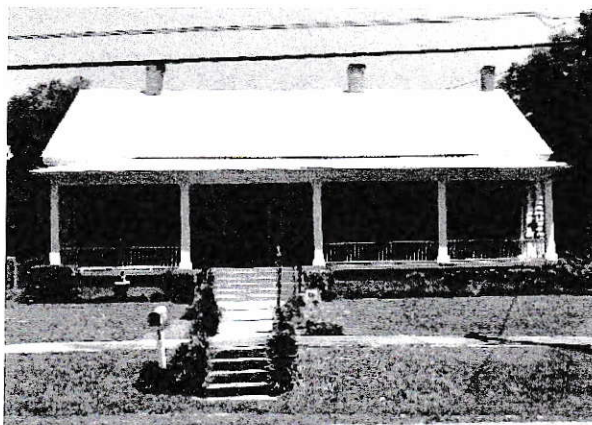
S003 082

R4; 1.06 ac

Brown

ca. 1940 one story asymmetrical
vinyl siding entrance porch
side gable double hung sash 6/6

contributing



249 Hamilton St

S003 002

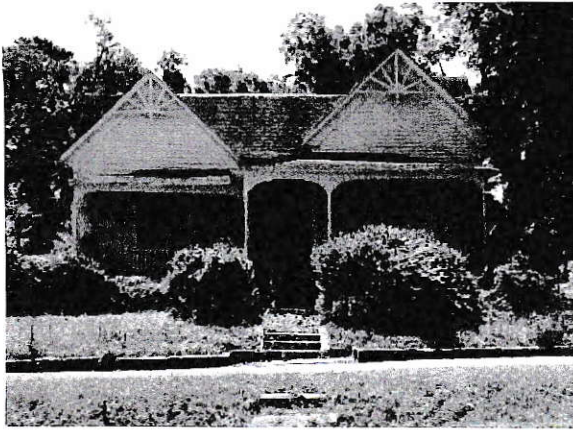
R3; 0.81 ac

Laird

Greek Revival / Early Classical
elements

ca. 1817 modified in 1840's
one story asymmetrical side gable
clapboard full front porch
double hung sash 6/9 windows

contributing



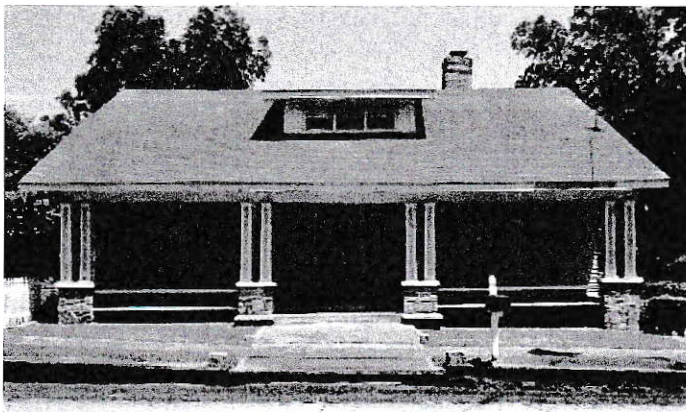
Folk Victorian elements
Queen Anne Cottage
ca. 1890 one story asymmetrical
front gables asphalt shingles
front full porch shed style
decorative vergeboards and turned
porch supports and brackets
contributing

264 Hamilton St

S003 081

R3; 0.48 ac

Chandler



Craftsman / Bungalow
ca. 1910 one and a half stories
symmetrical side gable
clapboard stone foundation
recessed full front porch
asphalt shingles
double hung sash 6/6 windows
paired square columns on
Granite piers
shed roof dormer with a tri-
partite window

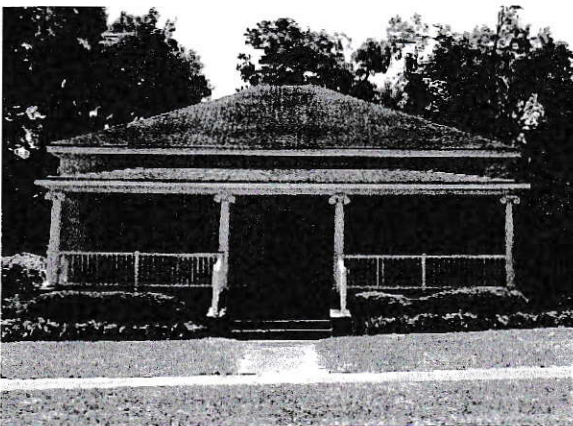
277 Hamilton St

S003 003

contributing

R4; 4.48 ac

Mosley



New South Cottage
ca. 1900 one story asymmetrical
hip roof asphalt shingles
full one story hip roofed porch
square porch supports
double hung sash 6/6

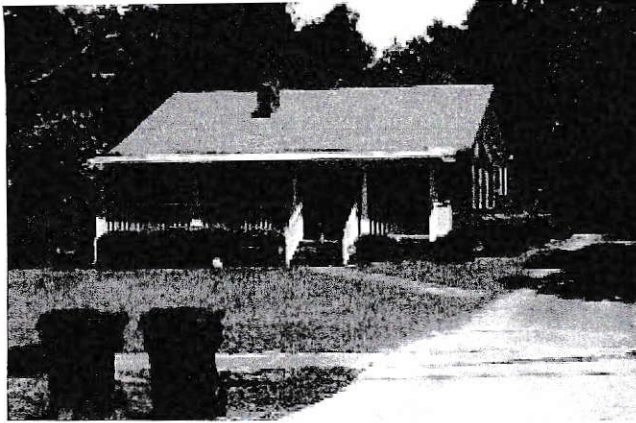
contributing

282 Hamilton St

S003 080

R3; 0.53 ac

Lester



ca. 1940 one story asymmetrical
side gable asphalt shingles
brick construction
full shed porch
double hung sash 2/2

contributing

349 Hamilton St

S003 005

R4; 1.24 ac

Warren



Colonial Revival elements
ca. 1900 two stories asphalt shingle
removed full one story wrap around
porch originally had terra cotta
ionic capitals on round columns
double hung sash 6/1 windows
hip roof and shed porch

contributing

350 Hamilton St

S003 072

R3; 0.72 ac

Christian

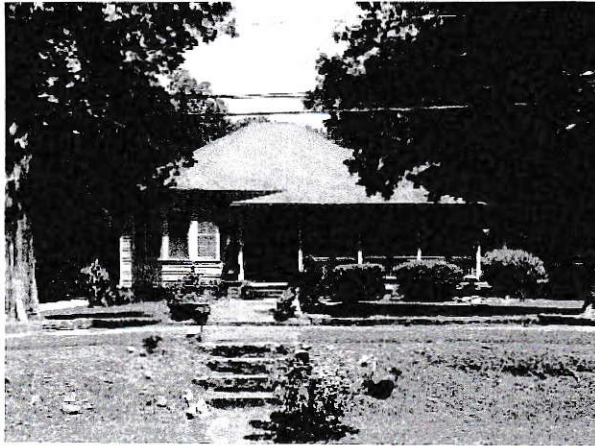
-- VACANT WOODS

Hamilton St

S004 004

E3; 0.83 ac

Vacant woods



361 Hamilton St

S003 006

R3; 0.87 ac

Womack

Folk Victorian / Queen Anne Cottage
ca. 1890 one story asymmetrical
hip asphalt shingles
clapboard brick pier foundation
one story wrap around porch with
shed roof chamfered supports
double hung sash 4/4

contributing



373 Hamilton St

S003 007

R4; 1.17 ac

Old Hollis

Colonial Revival elements
ca. 1930 one story asymmetrical
side gable asphalt shingle
brick construction
double hung sash
fluted pilasters surround front door

contributing



419 Hamilton St

S003 010

R; 0.9 ac

Yisrael

Greek Revival elements
ca. 1870 one story symmetrical
hip metal roof
weatherboard clapboard
one story hip shed front porch
double hung sash 6/6 windows

contributing



Greek Revival
ca. 1850 one story full basement
in rear half of house
symmetrical hip roof asphalt shingles
mortis and tenon
clapboard stone foundation piers
full front porch shed roof
double hung sash 6/6

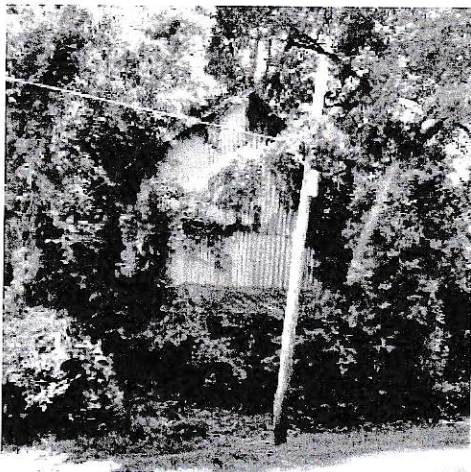
contributing

451 Hamilton St

S003 011

R; 0.91 ac

Harrouk



ca. 1940 two story asymmetrical
front gable metal sides and roof

contributing

458 Hamilton St

S003 062

C; 0.2 ac

Harrouk



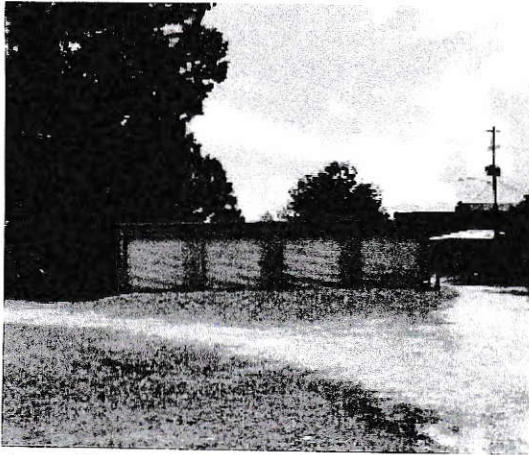
noncontributing
Intrusion

471 Hamilton St

S003 012

C; 0.34 ac

Mr. C



noncontributing
Intrusion

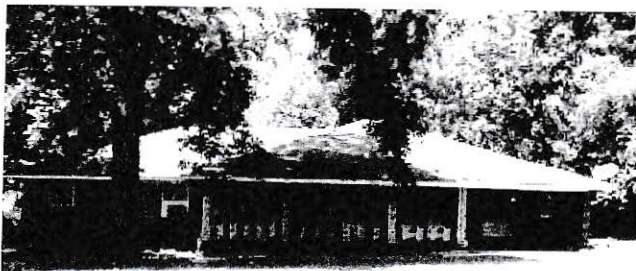
0 Hamilton St S003 061
C3; 0.55 ac
Storage Bldgs - Webster



ca. 1870 - 1900 two story
symmetrical hip metal roof
clapboard stone foundation
shed porch removed
double hung sash 6/6 except on the
front - stationary multi-paned

contributing

505 Hamilton St S003 016
C; 0.62 ac
Livery

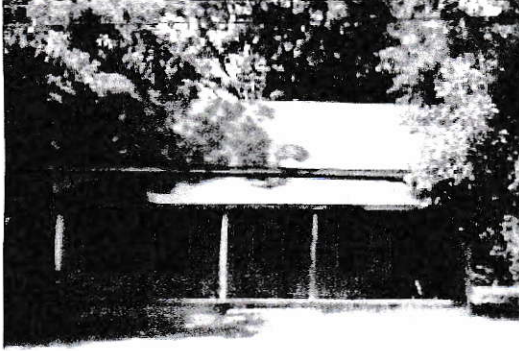


ca. 1988 Ranch
hip asphalt roof
three pane jalousie windows
carport on right side
asymmetrical brick
porch supported by metal columns

contributing



547 Hamilton St S003 017
R; 0.62 ac
Ingram



Greek Revival elements
ca. 1840 symmetrical one story
side gable asphalt shingles
mortise and tenon clapboard
brick pier with infill
one story full porch shed roof
double hung sash windows 6/6

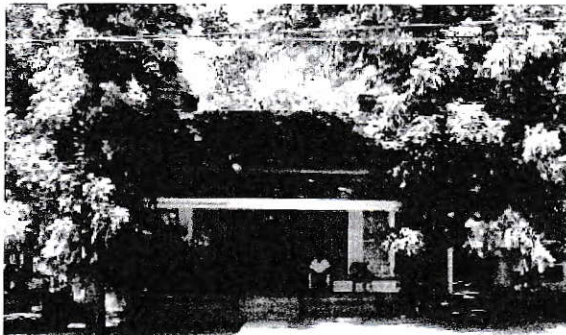
contributing

565 Hamilton St

S003 018

R; 0.6 ac

Harris



ca. 1910 Greek Revival elements
side gable asphalt shingles
brick foundation end chimney
full front porch
6/6 double hung sash windows

contributing

577 Hamilton St

S003 020

R; 0.62 ac

Harrouk



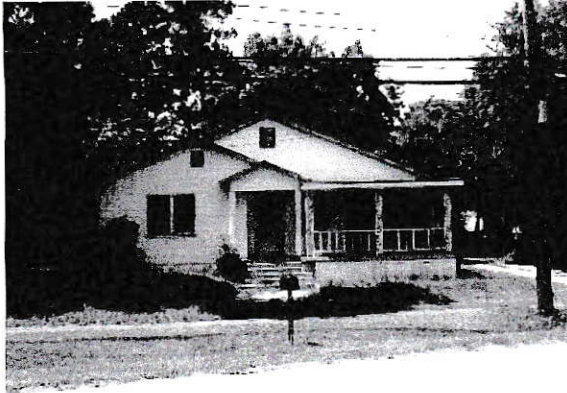
contributing

607 Hamilton St

S002 026

E; 10.16 ac

Sparta Cemetery



ca. 1940 one story asymmetrical
front gable asphalt shingles
asbestos siding brick foundation
full front porch
double hung sash 2/2

contributing

661 Hamilton St

S003 022

E; 0.33 ac

Harrouk

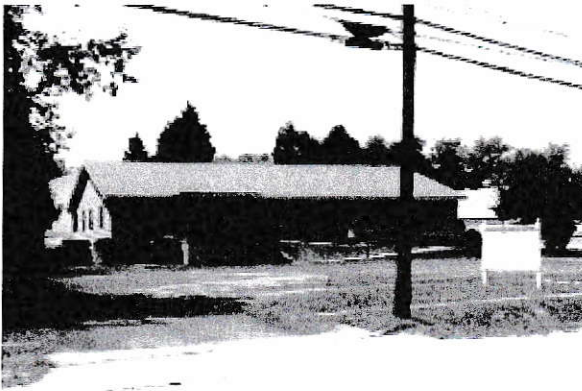
-- VACANT LOT in front of Drive-thru

Hamilton St

S003 023A

C3; 0.2 ac

Bank of Hancock Co



noncontributing
Intrusion

675 Hamilton St

S002 025 C2

C3; 0.41 ac

Home Health Center



701 Hamilton St

S002 025 C1

C4; 2.65 ac

Ace Hardware

ca. 1950 warehouse one story
metal siding and roof

contributing



401 East Hamilton St

S007 034

I; 0.97 ac

Furniture Factory

old furniture factory
ca. 1850 - 1870 one story
brick warehouse asymmetrical
front gable asphalt shingles

contributing



336 Hancock St

S009 015

R3; 0.96 ac

Patillo

Georgian Type with Craftsman elements
Ca. 1890

Asymmetrical two story
hip roof asphalt shingles
balloon framing aluminum siding
full front porch shed one story
double-hung sash 1/1 windows

contributing

-- OLD SEWER TREATMENT POND --

116 Hancock St 143B 016

E1; 3 ac

City of Sparta

Hancock and Boland Sts S004 053

V4; 19.02 ac

Hitchcock

-- VACANT WOODS --

Hancock St and Spring Sts S004 035

C4; 3.82 ac

Hancock Land Company



contributing

Hancock St @ Court St S004 034

E2; 1 ac

Catholic Cemetery



9535 Jones St S0033 071

R4; 1 ac

Smith

ca.1950 Ranch
brick end gable asphalt roof
double hung sash windows 6/6
small entry porch

contributing

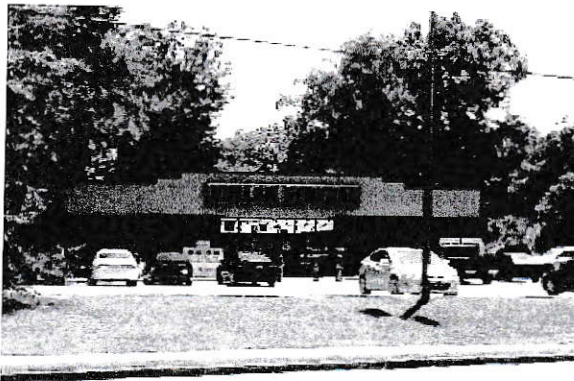


Commercial
ca. 1960 symmetrical one story
end gables asphalt shingles
brick sides

noncontributing

9532 Jones St
C3; 0.32 ac
Laundromat

S003 065



noncontributing
Intrusion

9632 Jones St
C4; 1.58 a
Dollar General

S003 009

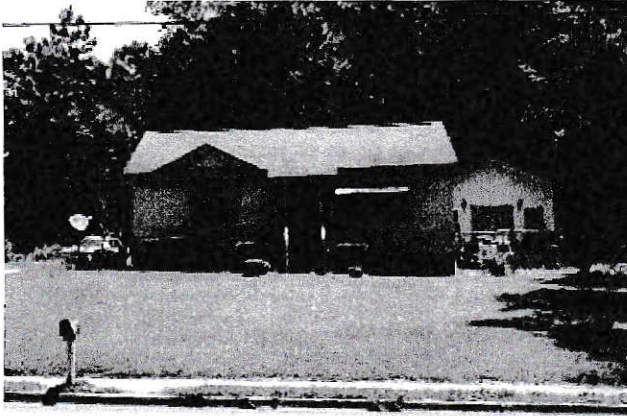


ca. 1910 one story symmetrical
side gable asphalt shingles
vinyl siding
double hung sash 1/1 windows

contributing

9661 Jones St
R4; 2.35 ac
Harper

S003 008



Ranch
ca. 1940 asymmetrical one story
side gable asphalt shingle roof
asbestos siding
double hung sash

contributing

9670 Jones St

S002 030

R3; 0.55 ac

Clayton



Folk Victorian
one story shotgun
ca. 1870 front gable asphalt shingle
clapboard small entry porch
square supports and decorative
spandrel. decorative circular
vent

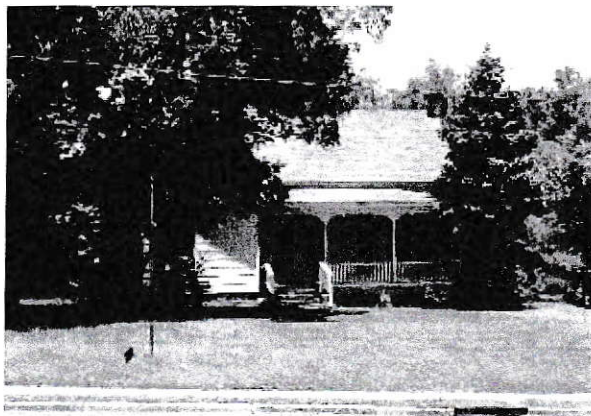
contributing

9687 Jones St

S002 031

R3; 2.58 ac

Joslyn



Folk Victorian
ca. 1890 one story asymmetrical
side gable asphalt shingles
clapboard brick pier with infill
porch shed roof partial
double hung sash 6/6

contributing

9700 Jones St

S002 029

R3; 0.83 ac

Walker



Federal three stories
ca. 1820 symmetrical hip roof
mortise and tenon construction
clapboards stone basement
double hung sash 12/12 windows

contributing

9705 Jones St

S002 031

R3

Joslyn

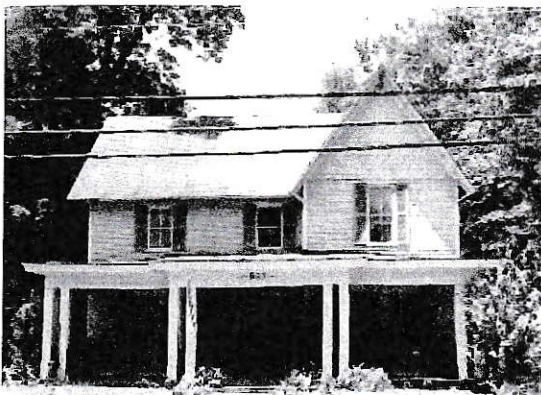
-- RECENT CLEAR-CUT --

Jones St & Railroad St

S002 033

R4; 5.6 ac

Della Smith



Folk Victorian
ca. 1900 side gable two stories
asymmetrical asphalt shingles
clapboard brick piers with infill
decorative shingles in gables
full one story porch square columns
double hung sash 2/2 windows

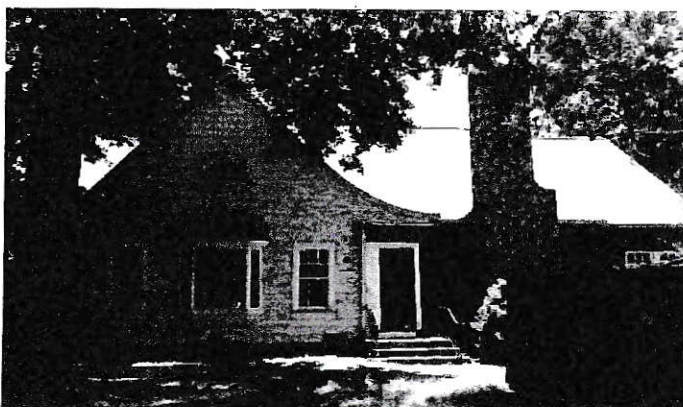
contributing

50 Maiden Ln

S003 091

R3; 0.37 ac

Jackie Craig



English Vernacular Revival
ca. 1920 one story asymmetrical
end gables asphalt shingles
wood clapboard with bead
stone foundation
double hung sash 6/6 windows

contributing

51 Maiden Ln

S003 094

R3; 0.34 ac

Moates house



57 Maiden Ln

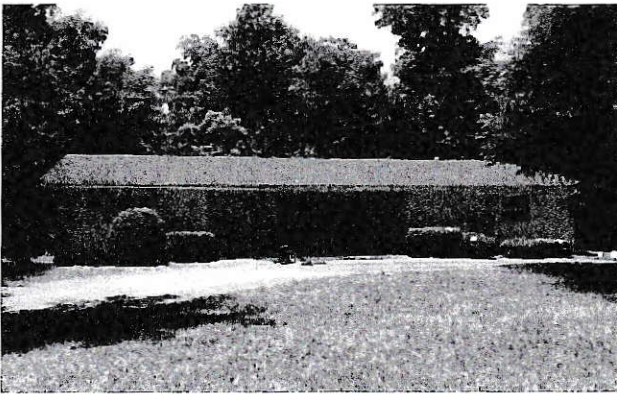
S003 093

R3; 0.62 ac

Terry Nelson

Colonial Revival
ca. 1920 two stories symmetrical
side gable asphalt shingles
stone foundation
small entrance porch features
fanlight and sidelights
double hung sash 6/6 windows

contributing



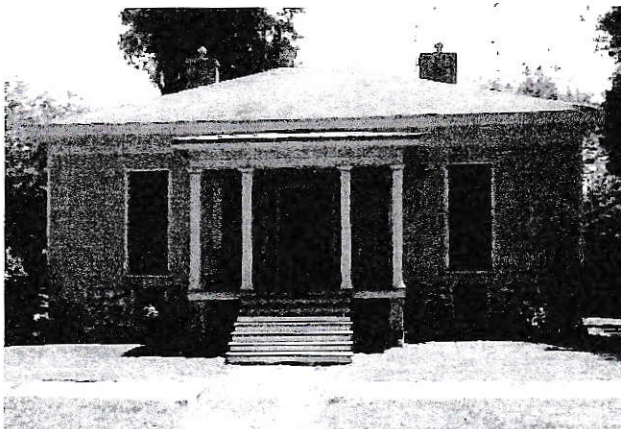
60 Maiden Ln

S003 092

R3; 0.72 ac

Florida house

noncontributing
Intrusion



101 Maiden Ln

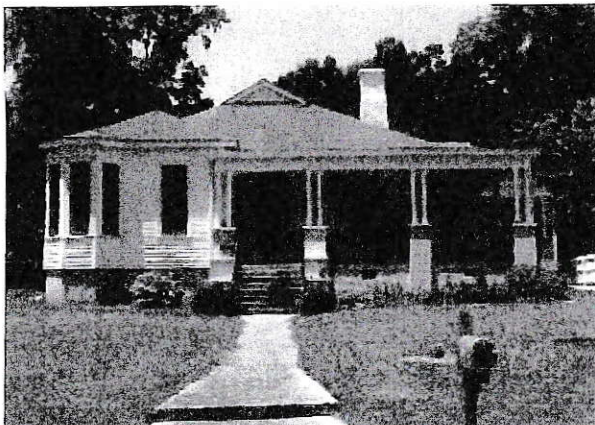
S004 022

R3; 0.69 ac

Woodall/Manse

Greek Revival Cottage
ca. 1830 one story front rear
half has two basement rooms.
symmetrical hip roof asphalt
mortise and tenon construction
clapboard brick
center front porch
double hung sash 6/9

contributing



Folk Victorian / Colonial Revival
ca. 1900 one story asymmetrical
gable on hip roof asphalt
vinyl siding brick foundation
porch -partial front wrap around side
paired columns
double hung sash 2/2

contributing

132 Maiden Ln

S004 004

E3; 0.83 ac

Methodist parsonage



Queen Anne Cottage
Craftsman elements
ca. 1890 one story asymmetrical
weatherboard brick foundation
porch front and wrap around
square supports
double hung sash 2/2

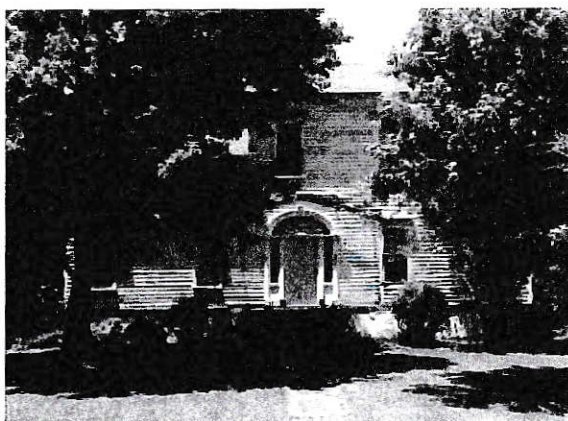
contributing

145 Maiden Ln

S04 021

R3; 0.61 ac

Osborne



Federal
ca. 1820 two stories asymmetrical
earlier house on left -Plantation
Plain / right side addition
side gables asphalt shingles
mortis and tenon construction
clapboard brick piers
missing porch
fanlight and sidelights entrance
double hung sash 9/9 windows

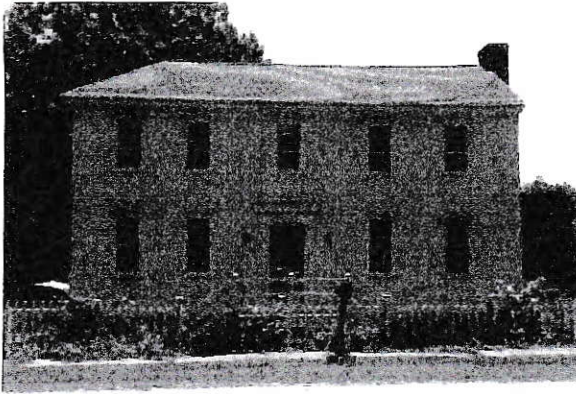
contributing

148 Maiden Ln

S004 005

R3; 1.06 ac

Ted Martin



Federal elements
ca. 1810 I-House three stories
symmetrical front hip asphalt
mortise and tenon construction
flat facade
double hung sash 9/9 windows

contributing

161 Maiden Ln
R4; 1.04 ac
Berry

S004 020



Italianate elements
ca. 1820 three stories asymmetrical
originally faced Short Street
mortise and tenon construction
hip metal roof on front asphalt on
rear.

clapboard brick foundation
porch one story full front
double hung sash 9/9 windows

contributing

180 Maiden Ln
R4; 4 ac
Alston house

S004 007



Craftsman elements
ca. 1910 one story symmetrical
hip metal roof stone piers infill
clapboard entry porch square
supportts on granite piers
double hung sash 6/1

contributing

189 Maiden Ln
R3; 0.64 ac
Hill

S004 019

-- VACANT LOT --

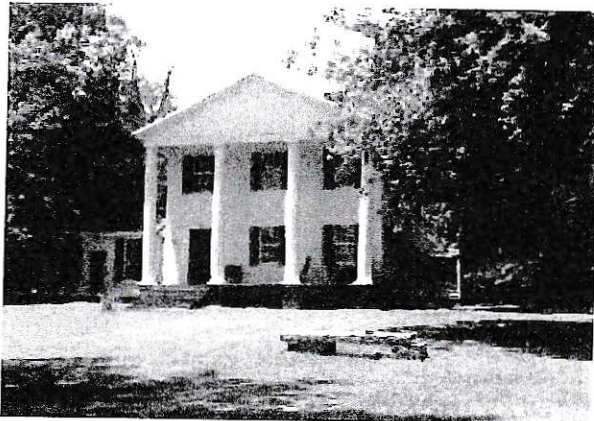
217 Maiden Ln

S004 018

R3; 0.84 ac

Open field, vacant

Hill



240 Maiden Ln

S004 008

R4; 1.33 ac

Fred West

Greek Revival elements
ca. 1832 side hall two story
asymmetrical front gable
asphalt shingles
mortise and tenon construction
clapboard brick piers
two story porch four columns
service wing on left side
double hung sash 6/6
wing windows 16/16

contributing



247 Maiden Ln

S004 015

R3; 0.82 ac

Hariston "Spanish house"

Mission elements
Craftsman elements
ca. 1920 one and a half stories
symmetrical hip tile roof
stucco finish
front porch partial
porte-cochere
windows fixed

contributing



Bungalow side gable ranch
ca. 1940 one story asymmetrical
brick porch recessed
double hung sash 2/2

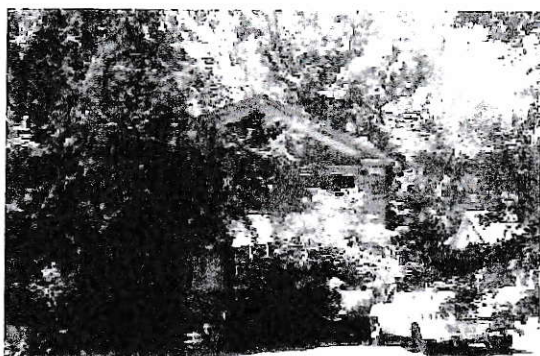
contributing

254 Maiden Ln

S004 009

R3; 0.3 ac

Desai



Greek Revival elements
ca. 1840 two stories side hall
asymmetrical front gable metal roof
mortise and tenon construction
porch one story full front turned
solid columns clapboard
double hung sash 6/6 windows

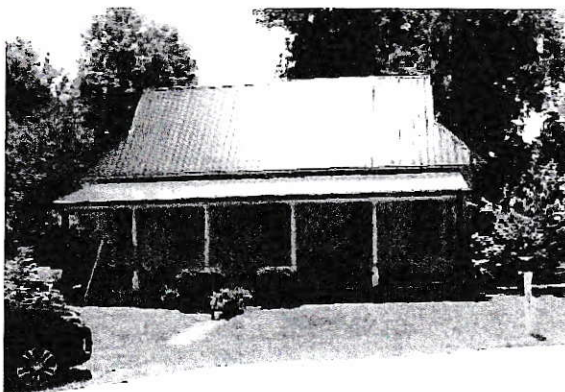
contributing

256 Maiden Ln

S004 010

R3; 0.31 ac

Youmans



Folk Victorian Cottage
ca. 1890 one story symmetrical
gable on hip metal side gable
clapboard brick
porch full front one story
double hung sash 2/2 windows

contributing

271 Maiden Ln

S004 014

R3; 0.81 ac

Rosemary O'Neil



281 Maiden Ln

S004 013

R3; 0.31 ac

Rodriguez

ranch
ca. 1940 one story asymmetrical
side gable asphalt shingles
asbestos siding brick foundation
enclosed porch
double hung sash 6/6 windows

contributing



297 Maiden Ln

S004 012

R4; 4 ac

Abercrombie

Federal elements
ca. 1820 three stories symmetrical
side gable asphalt shingles
mortise and tenon construction
clapboard entrance has fanlight and
sidelights
double hung sash 9/6 windows

contributing



320 Maiden Ln

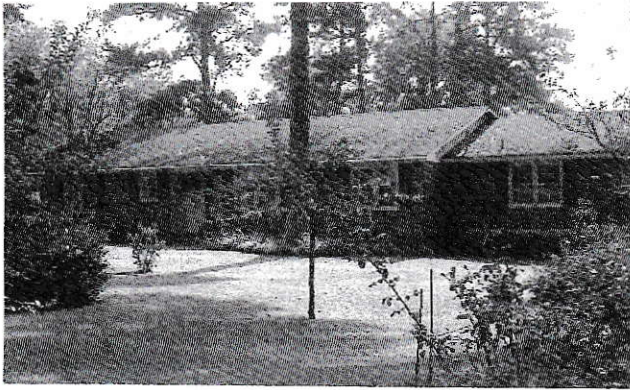
S004 011

R3; 1.11 ac

Dulcie Moore

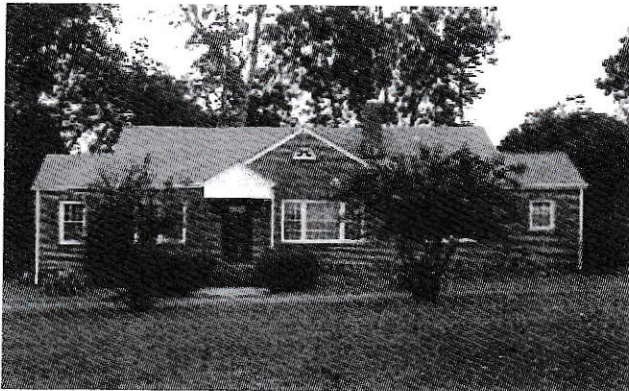
ca. 1960 Ranch
end gable brick asphalt shingles
6/6 double hung sash windows

contributing



Ranch
ca. 1974 asymmetrical
brick veneer asphalt shingles
side gable
6/6 double hung sash
contributing

397 Maiden Ln 143B 014
R3; 4.94 ac
Andrews



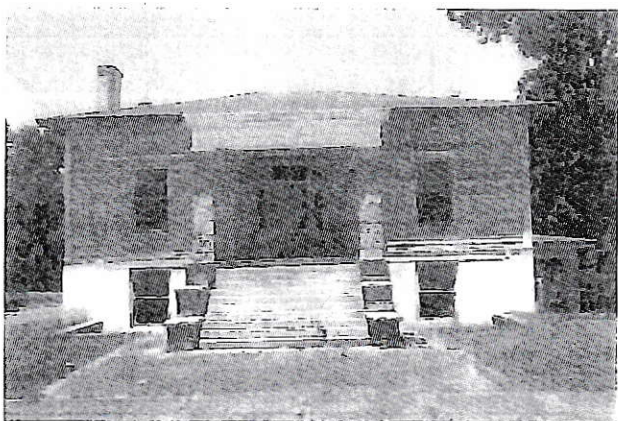
Ca. 1930
English Vernacular Revival elements
asymmetrical side gable
brick asphalt shingles
6/6 double hung sash windows
contributing

396 Maiden Ln 143B 012
R4; 2.27 ac
Stembridge



Federal / folk victorian
Ca. 1800 altered ca. 1890
symmetrical double front gable
side gables one story
mortise and tenon construction
vinyl siding asphalt shingles
full one story shed porch
9/9 double hung sash windows
contributing

370 Maiden Ln 143B 011
R4; 3.0 ac
Smith



40 Monument Sq

S003 066

R3; 0.27 ac

"Suits Us"

Greek Revival / Craftsman elements
ca. 1840 altered 1920 two stories
symmetrical hip metal roof
originally had full front porch
end bays removed 1970
mortise and tenon construction
clapboard
double hung sash 1/1 windows

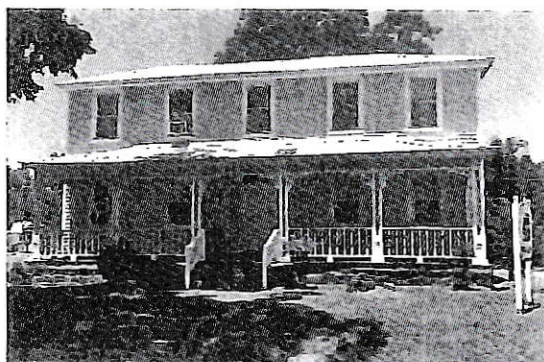
contributing

51 Monument Sq

S003 067

E; 0.52 ac

War Memorial Square



Court Square Inn, Monument Sq

Folk Victorian ca. 1830 two stories
symmetrical wood clapboard covered with
vinyl double hung sash 6/6
gingerbread cutouts and chamfered columns

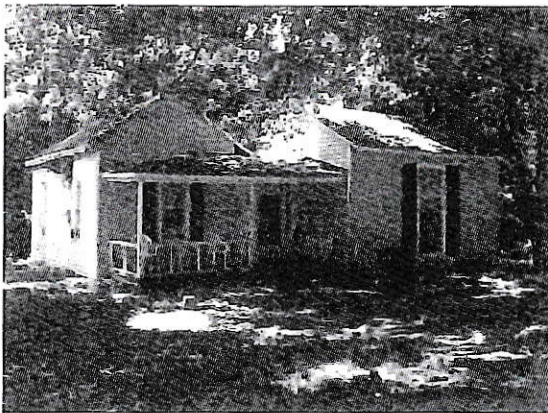
contributing



New South Cottage
ca. 1920 one story asymmetrical
hip roof asphalt shingles
clapboard recessed full front porch
metal supports
double hung sash 3/1 windows
contributing

70 Monument Sq
R3; 0.26 ac
Harrouk

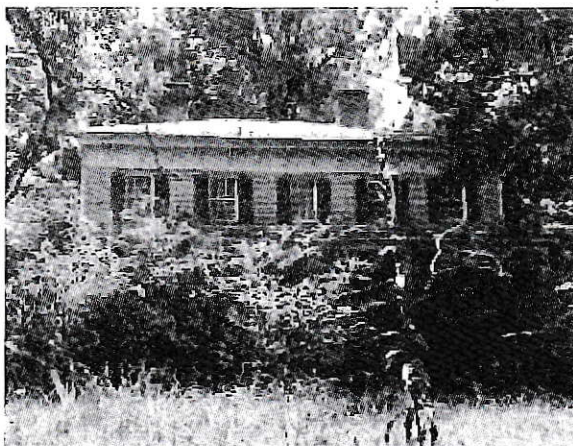
S003 070



cabin
ca. 1797 one story asymmetrical
front gable asphalt shingles
mortise and tenon construction
vinyl siding brick piers
double hung sash 9/9 windows
contributing

80 Monument Sq
R3; 0.26 ac
"Little red house"

S003 069



Greek Revival / Italianate
ca. 1830 two stories symmetrical
hip metal standing seam roof
mortise and tenon construction
clapboard
front one story full front porch
double hung sash 6/6 windows
contributing

22 Myrtle St
R; 1.06 ac
Wilson

S009 005



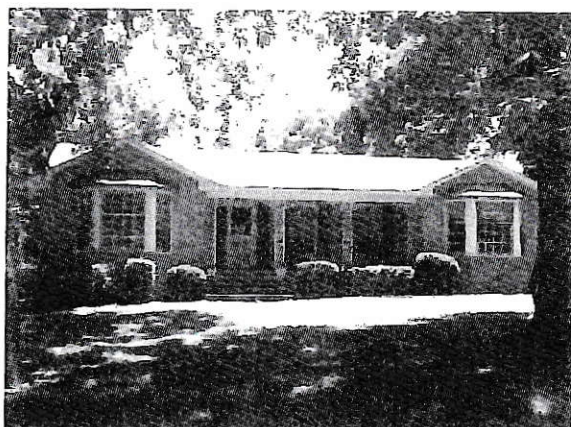
contributing

5 Powelton Ave

S007 036

C; 0.29 ac

Glenn Johnson store



ca. 1960 Ranch
symmetrical brick side gable
asphalt shingles
two front gables with bay windows
double hung sash 6/9 windows

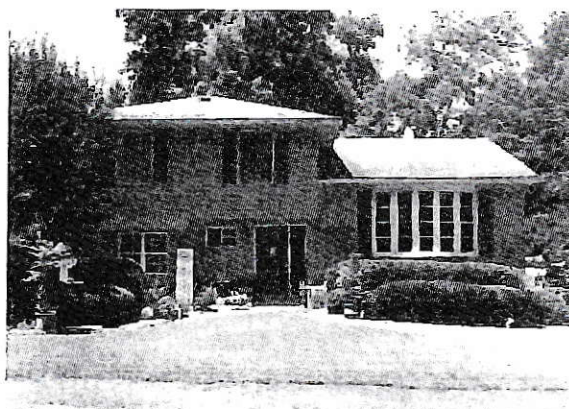
Contributing

26 Rabun St

S003 073

R3; 0.51 ac

Webster



ca. 1989 split level asymmetrical
hip on two story part - side gable
on one story part
asphalt shingles
brick with clapboard in gable
double hung sash 6/6 windows

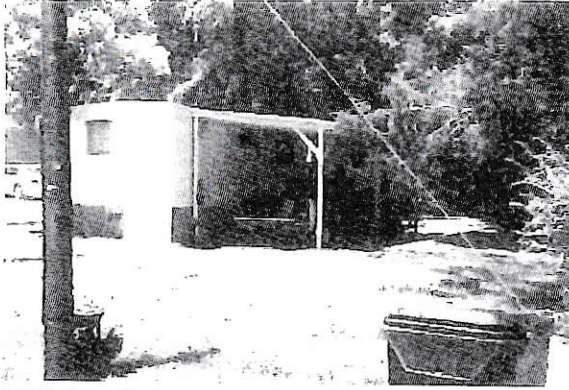
Contributing

51 Rabun St

S003 077

R3; 0.20 ac

Roberts



Noncontributing
Intrusion

57 Rabun St
R3; 0.15 ac

S003 078

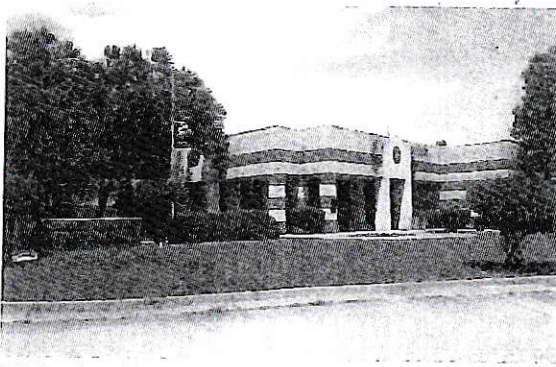


ca. 1920
end gable metal roof
vinyl novelty siding
replacement windows
6/6 double hung sash

Contributing

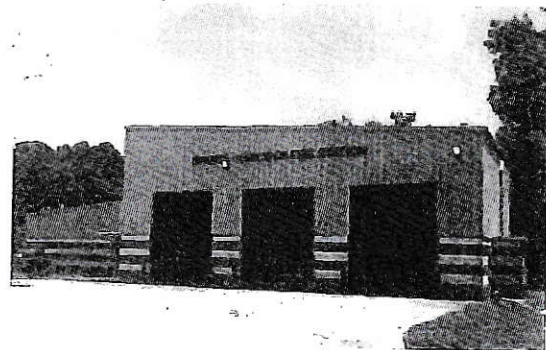
67 Rabun St
R3; 0.29 ac
Scoggins

S003 079

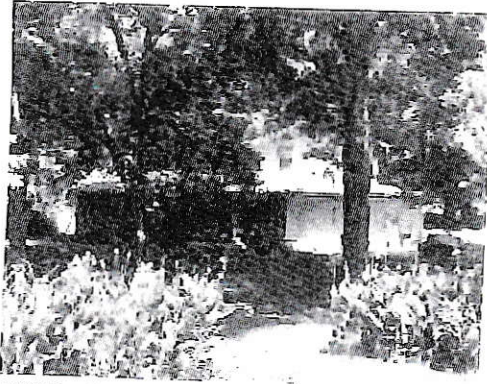


52 Spring St
E; 6.83 ac
Sheriff and Fire

S002 027



Noncontributing



Noncontributing
ca. 1985

179 Spring St

S003 015

R4; 1.46 ac

Lott

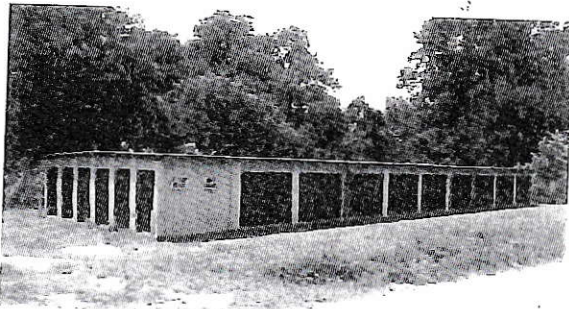
-- VACANT LOT, wooded --

Spring St

S003 014

C3; 0.77 ac

Avis Ventures



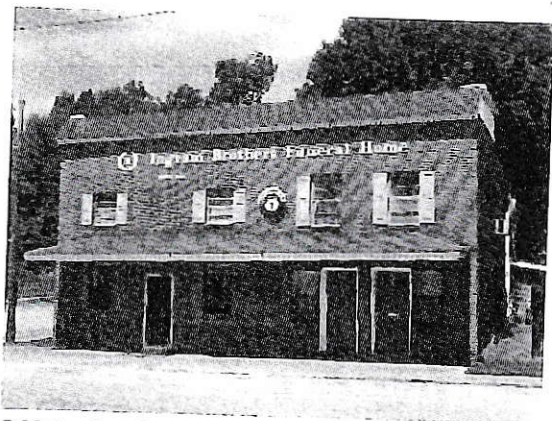
Noncontributing
Intrusion

204 Spring St

S003 013

C3; 0.83 ac

Self storage



ca. 1930 commercial
symmetrical brick construction
flat roof with parapet front
2/2 double hung sash windows

Contributing

249 Spring St

S003 036

C3; 0.17 ac

Ingram Funeral Home



Commercial
ca. 1970 asymmetric
front gable asphalt shingles
one story

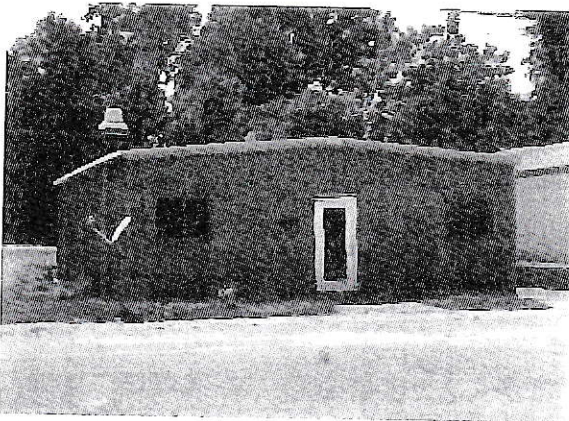
Noncontributing

250 Spring St

S003 060

C3; 0.12 ac

Mary's Kitchen



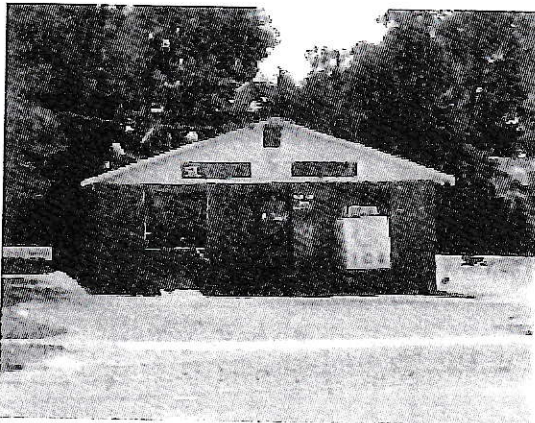
Noncontributing
Intrusion

258 Spring St

S003 059

C3; 0.12 ac

Barcus



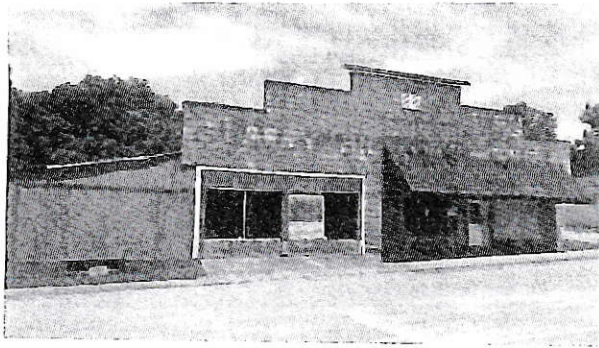
noncontributing

272 Spring St

S003 058

C; 0.18 ac

Kennedy



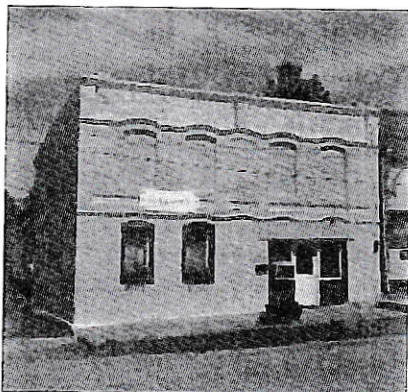
ca. 1930 symmetrical commercial
block construction with parapet
on front
metal roof
large plate glass windows

Contributing

273 Spring St S003 037
C3; 0.23 ac
Walker – Allied Store Bldg

-- VACANT LOT -- open

Spring St S003 038
R3; 0.06 ac
Dixon



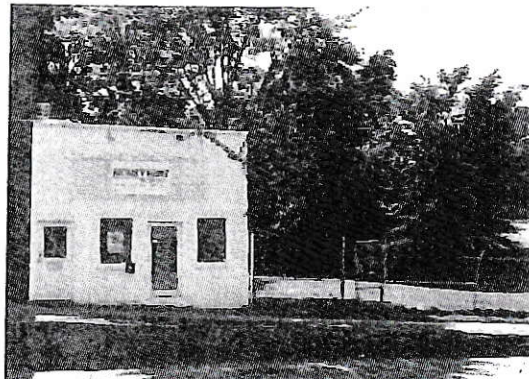
Commercial
ca. 1900 asymmetrical two stories
flat roof asphalt shingles
brick and stucco construction
double hung sash 6/6
arched windows have been infilled

Contributing

291 Spring St S003 039
C3; 0.12 ac
Warren

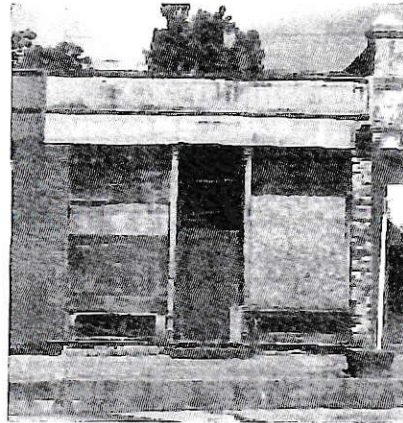


292 Spring St S003 057
E1; 0.23 ac
Compass Lodge No 160
Contributing
commercial and Lodge
two stories brick
stepped front gable



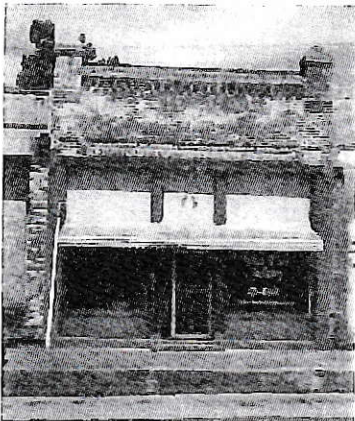


293 Spring St S003 040
C; 0.04 ac
Warren – Barber Shop

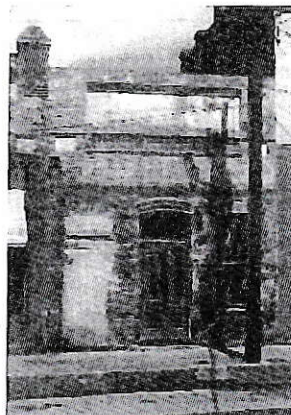


Commercial
ca. 1900 one story
symmetrical
brick exterior

Contributing



297 Spring St S003 041
C3; 0.11 ac
Reynolds
301 Spring St S003 041



301 Spring St (same PID#)

Commercial
ca. 1900
symmetrical
one story brick

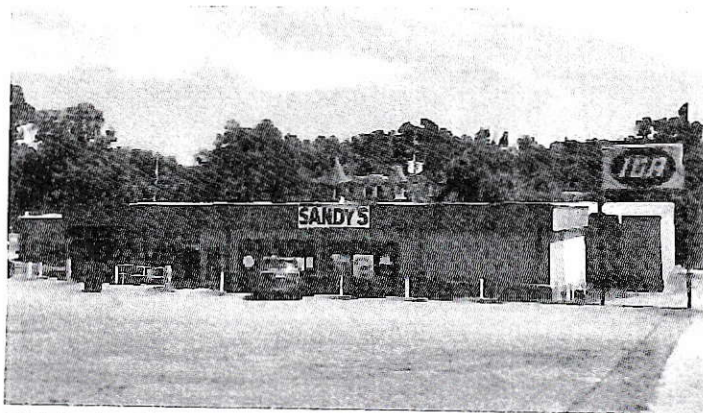
Contributing



360 Spring St S003 107
C; 0.93 ac
Family Dollar

Noncontributing

Intrusion



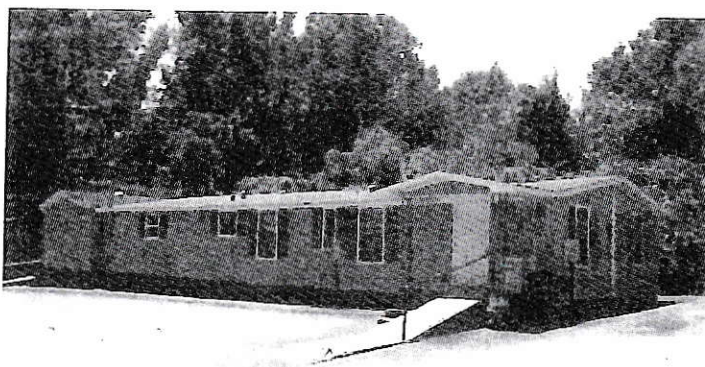
Noncontributing
Intrusion

385 Spring St

S003 109

C; 1.16 ac

Sandy's IGA



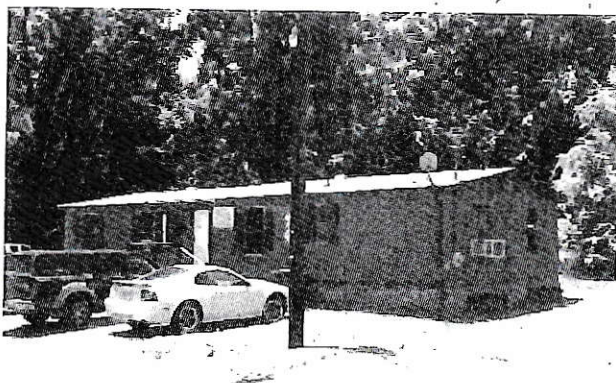
Noncontributing
Intrusion

446 Spring St

S004 040

C3; 0.25 ac

Dr. Akhras



Noncontributing
Intrusion

470 Spring St

S004 036

C3; 0.29 ac

Darby

— VACANT LOT — wooded

Spring and Hancock St

S004 035

C4; 3.82 ac

Hancock Land Company

-- VACANT LOT -- wooded

Spring and Hancock St

S004 035

C4; 3.82 ac

Hancock Land Company

PARCEL No.	PARCEL ADDRESS	OWNER NAME
S008 048	107 Adams Street	Preserving Georgia
S008 046	114 Adams Street	Albert Yancey
S008 047	135 Adams Street	Stacey Babb-Richardson
S008 045	138 Adams Street	Larry Walker
S009 004	191 Adams Street	Fannie Murphy
S004 030 S009 003	Adams Street	Farouk Harrouk
S003 121	212 Adams Street	Fannie Murphy
S004 044	Graves Barn	Sparta Hancock Historic Society
S009 002		Franklin Hitchcock
S004 043	305 Adams Street	Hermينو Avila
S008 049	77 Adams Street	Apostolic Faith Kingdom
S003 108	354 Adams Street	John L. Harris Jr.
S004 041	corner of Adams & Spring	Michaele Campbell
S004 042	371 Adams	Gary Meeks
S004 025	449 Adams Street	Southern Bell
S004 024	469 Adams Street	Bipinkimar Patel
S003 098	470 Adams Street	Sheila R. Grable
S004 023	485 Adams Street	Farouk Harrouk
S004 003	545 Adams Street	William Matson
S004 002	565 Adams Street	Sherry Buchanan
S004 001	589 Adams Street	Clifford Brown
S008 018	12333 Augusta Hwy.	Darshini Parekh
S003 034	14 Boland Street	Johnny Simmons
S003 023	21 Boland Street	Pierce Memorial Church
S003 024	vacant lot	Bank of Hancock
S003 033	vacant lot	Corporation for Pierce Memorial

PARCEL No.	PARCEL ADDRESS	OWNER NAME
S003 032	52 Boland Street	Salena Barnes
S003 117	156 Boland Street	Farouk Harrouk
S003 122	161 Boland Street	Ben Butts
S003 118	164 Boland Street	Scott Garrison
S009 001	235 Boland Street	Tiffany Lynn
S004 047	246 Boland Street	Bacon Land Co.
S009 006	251 Boland Street	Shankar Patel
S009 007	271 Boland Street	Connie Williams
S004 048	272 Boland Street	Mary Hitchcock
S009 008	291 Boland Street	Milford Thomas
S004 049	292 Boland Street	Clifford D. White, Jr.
S004 050	306 Boland Street	Lafe W. Fiske
S009 010	317 Boland Street	Yash P. Chawla
S009 013	363 Boland Street	Roy Lawrence
143B 004	12404 Broad Street	Robert Cobb
143B 005	12416 Broad Street	Farouk Harrouk
143B 006	12440 Broad Street	Clyde W. Mayer
S003 083	12445 Broad Street	Meredith Ransom
S003 088	12470 Broad Street	R. Allen Haywood
S003 084	12471 Broad Street	Ernie Gonzales
S003 089	12490 Broad Street	R. Allen Haywood
S003 085	12491 Broad Street	Joseph B. Logue III
S003 086	12511 Broad Street	John E. Jones
S003 075	12525 Broad Street	John T. Roberts
S003 090	12530 Broad Street	Griffith Polatty Mark Phillips
S003 076	12533 Broad Street	Carter Watkins Associates

PARCEL No.	PARCEL ADDRESS	OWNER NAME
S003 074	12557 Broad Street	Paul Hitchcock & John Hitchcock
S003 095	12560 Broad Street	Carter Watkins Associates
S003 096	12588 Broad Street	Carter Watkins Associates
S003 068	12595 Broad Street	Wit Holdings Llc
S003 097	12600 Broad Street	Bhagwandas Patel
S003 100	12630 Broad Street	Hancock County
S003 102	12664 Broad Street	Lafayette Limited Partners
S003 064	12665 Broad Street	Guy Davenport
S003 048	12671 Broad Street	Mitchell Tribble
S003 049	12675 Broad Street	Center for Community Development
S003 050	12681 Broad Street	Rav Z. Yiarael
S003 051	12681 Broad Street	Askea Lewis
S003 103	12688 Broad Street	City of Sparta
S003 052	12691 Broad Street	Adrian Patrick
S003 104	12694 Broad Street	Son Young Pyo
S003 053	12695 Broad Street	Fred Webster
S003 105	12698 Broad Street	Virginia Webb
S003 054	12701 Broad Street	Fred Webster
S003 055	12705 Broad Street	Webster's Pharmacy
S003 106	12706 Broad Street	A'Keti J. Griffin
S003 056	12707 Broad Street	Webster's Pharmacy
S003 110	12722 Broad Street	Ki Yun Kim
S003 042	12723 Broad Street	Zachery Reynolds
S003 043	12729 Broad Street	Zachery Reynolds
S003 044	12735 Broad Street	Zachery Reynolds

PARCEL No.	PARCEL ADDRESS	OWNER NAME
S003 124	12834 Broad Street	Shankar Patel
S003 111	12736 Broad Street	Chaka Bundrage
S003 045	12739 Broad Street	Farouk Harrouk
S003 112	12744 Broad Street	Garrett's Red & White
S003 046	12745 Broad Street	Charles Jones
S003 047	12755 Broad Street	James R. Hattaway Jr.
S003 028	12761 Broad Street	Sherard Kennedy Jr.
S003 029	12771 Broad Street	Sherard Kennedy Jr.
S003 113	12762 Broad Street	Henry L. Hargrove
S003 114	12776 Broad Street	City of Sparta
S003 030	12777 Broad Street	Rav Zuridan Yisrael
S003 031	12781 Broad Street	Ki Y Kim
S003 116	12782 Broad Street	Frederich Perivier
S003 115	12798 Broad Street	Vasanthu Edussuriya
S003 123	12820 Broad Street	Sky Property Management Llc
S003 025	12825 Broad Street	Sanjay Patel
S003 026	Lot	Bank of Hancock
S003 125	12860 Broad Street	Washington Electric Member
S008 004	12877 Broad Street	Federal Building
S008 044	12884 Broad Street	Sparta Presbyterian Church
S008 005	12889 Broad Street	Bank Ameris
S008 043	12900 Broad Street	Leroy Justice
S008 006	12903 Broad Street	Trance Boone
S008 042	12912 Broad Street	City of Sparta
S008 007	12923 Broad Street	Channell Sparta Llc.
S008 041	12936 Broad Street	Melvyn Williams
S008 035	9090 East Broad Street	Sparta Baptist Church

PARCEL No.	PARCEL ADDRESS	OWNER NAME
S008 039	9111 East Broad Street	Om Mahi Inc.
142D 042	25 Burwell Street	Thomas Reagin
142D 043	705 Burwell Street	James Baker
	Old Jail	Hancock County
S004 028	75 Court Street	Richard Smith
S004 026	94 Court Street	Mattie Gentry
S004 027	Court Street	John McNeal
S004 031	115 Court Street	Lucy Kendrick
S004 032	516 Court Street	Wingfield Jones
S004 017	222 Court Street	Freddie Joe Brown
S003 099	40 Courthouse Square	Hancock County
S003 101	64 Courthouse Square	Hancock County
S007 038	15 Elm Street	Robert Currey
S008 012	22 Elm Street	Glenn Johnson
S007 037	37 Elm Street	Robert Currey
S008 011	44 Elm Street	Jimmy Huff
S008 013	53 Elm Street	Glenn Johnson
S008 010	60 Elm Street	Glenn Johnson
S008 014	71 Elm Street	Glenn Johnson
S008 009	76 Elm Street	Glenn Johnson
S008 015	91 Elm Street	Robert Currey
S008 016	105 Elm Street	Rhonda Burgamy
S008 008	112 Elm Street	Robert Currey
S008 017	123 Elm Street	Karen West
S008 038	245 Elm Street	Cynthia J. Smith
142D 040	201 Hamilton Street	Cassie Clark

PARCEL No.	PARCEL ADDRESS	OWNER NAME
S003 001	229 Hamilton Street	Teresa B. Hollis
S003 082	230 Hamilton Street	David Brown
S003 002	249 Hamilton Street	Belinda Laird
S003 081	264 Hamilton Street	Samuel T. Chandler
S003 003	277 Hamilton Street	Keith Mosley
S003 080	282 Hamilton Street	W. H. Lester
S003 005	349 Hamilton Street	Brenda J. Warren
S003 072	350 Hamilton Street	Harris Little
S004 004	Lot Hamilton Street	Pierce Memorial Church
S003 006	361 Hamilton Street	Charles Womack
S003 007	373 Hamilton Street	S. H. Hollis III
S003 010	419 Hamilton Street	Rav Zuridan Yisrael
S003 011	451 Hamilton Street	Farouk Harrouk
S003 062	458 Hamilton Street	Farouk Harrouk
S003 012	471 Hamilton Street	Jeremy Jackson
S003 061	Hamilton Street	Fred Webster III
S003 016	505 Hamilton Street	Juilio Mejia
S003 017	547 Hamilton Street	Alexander Ingram
S003 018	565 Hamilton Street	Janice Harris
S003 020	577 Hamilton Street	Chad Carlson
S002 026	607 Hamilton Street	Sparta Cemetery
S003 022	661 Hamilton Street	Farouk Harrouk
S003 023A	Hamilton Street	Bank of Hancock
S002 025 C2	675 Hamilton Street	Home Health Center
S002 025 C1	701 Hamilton Street	John T. Roberts
S007 034	401 Hamilton Street	Sparta Furniture Factory

PARCEL No.

PARCEL ADDRESS

OWNER NAME

143B 016	116 Hancock Street	City of Sparta
S004 053	Hancock Street	Franklin Hitchcock
S004 035	Hancock Street	Hancock Land Co.
S004 034	Hancock Street	Catholic Church Site
S009 015	336 Hancock Street	Charles Patillo
S003 071	9535 Jones Street	Della Smith
S003 065	9532 Jones Street	Farouk Harrouk
S003 009	9632 Jones Street	D.G.Sparta Llc
S003 008	9661 Jones Street	Willie Harper
S002 030	9670 Jones Street	Ruthie Crayton
S002 031	9687 Jones Street	Richard Joslyn
S002 029	9700 Jones Street	Farouk Harrouk
S002 031	9705 Jones Street	Richard Joslyn
S002 033	Jones Street	Della Smith
S003 091	50 Maiden Lane	Jackie Craig
S003 094	51 Maiden Lane	Carter Watkins Associates
S003 093	57 Maiden Lane	William Case
S003 092	60 Maiden Lane	Fred Webster III
S004 022	101 Maiden Lane	James Woodall & Julie Weaver
S004 004	132 Maiden Lane	Pierce Memorial Church
S004 021	145 Maiden Lane	William Osborne
S004 005	148 Maiden Lane	James Woodall
S004 020	161 Maiden Lane	Steven Burnie
S004 007	180 Maiden Lane	Theodore Martin Jr.
S004 019	189 Maiden Lane	Derek Hill

PARCEL No.	PARCEL ADDRESS	OWNER NAME
S004 018	217 Maiden Lane	Derek Hill
S004 008	240 Maiden Lane	Fred West
S004 015	247 Maiden Lane	Cheree Hairston
S004 009	254 Maiden Lane	Rashmita Desai
S004 010	256 Maiden Lane	James Youmans
S004 014	271 Maiden Lane	Rosemary O'Neal
S004 013	281 Maiden Lane	Guillermo Rodrigaez
S004 012	297 Maiden Lane	Guillermo Rodrigaez
S004 011	320 Maiden Lane	John Roberts
143B 011	370 Maiden Lane	Tonya Bradley
143B 012	396 Maiden Lane	Annie Stenbridge
143B 014	397 Maiden Lane	Dwain Andrews
S003 066	40 Monument Square	Teresa Hollis
S003 067	51 Monument Square	Hancock County
S003 070	70 Monument Square	Farouk Harrouk
S003 069	80 Monument Square	Farouk Harrouk
S009 005	22 Myrtle Street	James Wilson
S007 036	5 Powelton Avenue	Glenn Johnson
S003 073	26 Rabun Street	William Webster
S003 077	51 Rabun Street	John Roberts
S003 078	57 Rabun Street	Dennard Scoggins
S003 079	67 Rabun Street	Dennard Scoggins
S002 027	52 Spring Street	Hancock County
S003 015	179 Spring Street	Golden Lott
S003 014	Spring Street	Avis Ventures

OWNER NAME

[illegible]